

OPHTHALMIC Product Guide

Special Advertising Section



Dear Doctor,

Review of Optometry is pleased to offer you this preview of many exciting new products now available in the ophthalmic marketplace.

Here, you'll learn about innovative new medications, diagnostic instruments, corrective lens options, in-office laboratory equipment and many other products. There are two ways to obtain more information on a particular product:

1. Go to www.reviewofoptometry.com, click Supplements, Product Guide digital edition, and then follow the prompts.
 2. Circle the corresponding number on the enclosed reader service card for each product of interest. Fill in your name and address, and return the postage-paid card to us. Educational materials will be sent directly to you by the individual companies.
- Thank you for your interest and support!

START SELLING REFRESH® ONLINE

DAY TIME DAY TIME ANYTIME NIGHTTIME

Give your patients the relief you recommend for their dry, irritated eyes delivered right to their door.

Circle No. 1 Refresh Direct ECOMMERCE

To register, call 833-246-4393, or visit refreshbrand.com/doc

© 2020 Allergan. All rights reserved. All trademarks are the property of their respective owners. REF137404 06/20

DIGITAL SLIT LAMPS
— IN ANY STYLE —

- Keeler Optics
- Choose from a variety of Keeler Certified add-ons
- 3 step drum (10x, 16x, 25x)
- 5 step drum (6x, 10x, 16x, 25x, 40x)
- Your choice of image capturing software

Circle No. 2

Keeler — A world without vision loss —

Contact us for pricing & more information
800.523.5620 // 610.353.4350 // KEELERUSA.COM

A Halmco company

Circle No. 3

VISUAL ADVANTAGE™
BY LUNOVUS

BEST-IN-CLASS MACULAR HEALTH VITAMINS

AFFORDABLE HIGH QUALITY SCIENCE BASED FORMULA VARIATIONS TO MEET THE NEEDS OF EVERY PATIENT.

PROUDLY MADE IN THE USA

DID YOU KNOW?
Lunovus offers an automated subscription service to ensure patients have access to doctor-recommended eye care products, like AREDS 2, whenever and wherever they need them. It's FREE to sign-up and your patients get FREE delivery!

CALL 205-285-3875 TO EXPLORE OUR SUPERIOR LINE OF VITAMINS AND VIRTUAL SUBSCRIPTION SERVICE TODAY!

SCANMATE FLEX

DGH TECHNOLOGY, INC.
THE ULTRASOUND SPECIALIST

Circle No. 4

- Ophthalmic ultrasound platform that is configurable to your needs
- Improved B-Scan probe design for better reliability
- Contact and Immersion A-Scans
- UBM Capabilities with ClearScan®
- Area, angle, length measurements, and annotation tool
- Easy export to your EMR/EHR of Videos, Images, and PDF files

(800) 722-3883
www.dghtechnology.com

Requesting product information is now fast and easy! Go to www.reviewofoptometry.com, click Supplements, Product Guide digital edition and follow the prompts to request product information.

OPHTHALMIC

Product Guide

THE PROFESSIONAL'S CHOICE

- + Suitable for every patient
- + No corneal disruption
- + Consistent & accurate measurement
- + No drops, air, or calibration



Circle No. 5
icare
ic100

call 888.422.7313
email info@icare-usa.com
visit www.icarecentervue.com

24-HOUR AT HOME TONOMETRY

- + Easy to use
- + Remote diurnal IOP curve
- + Long term monitoring
- + Alert notifications

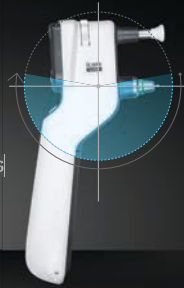


Circle No. 6
icare
HOME

call 888.422.7313
email info@icare-usa.com
visit www.icarecentervue.com

200 DEGREES OF TONOMETRY

- + Supine, elevated & seated
- + No drops, air, or calibration
- + Consistent & accurate measurement
- + Single or multiple measurements per button press



Circle No. 7
icare
ic200

call 888.422.7313
email info@icare-usa.com
visit www.icarecentervue.com

AUTOMATED TRUECOLOR RETINAL IMAGING

- + TrueColor confocal imaging
- + Fast image acquisition
- + Ultra-high resolution
- + No dilation (2.5mm pupil size)



Circle No. 8
icare
centervue

call 888.422.7313
email info@icare-usa.com
visit www.icarecentervue.com

ULTRA HIGH RESOLUTION RETINAL IMAGING

- + Wide-field view
- + TrueColor
- + Ultra-high resolution
- + Fluorescein angiography video & imaging



Circle No. 9
icare
centervue

call 888.422.7313
email info@icare-usa.com
visit www.icarecentervue.com

FUNDUS AUTOMATED PERIMETRY

- + More reliable visual field
- + Real-time retinal tracking
- + No trial lens required
- + TrueColor confocal retinal imaging



Circle No. 10
icare
centervue

call 888.422.7313
email info@icare-usa.com
visit www.icarecentervue.com

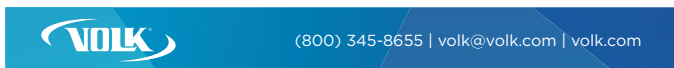
OPHTHALMIC

Product Guide



Image Anyone. Anywhere.

- Powerful small pupil capability allows imaging through pupils - 3 mm
- Get a full day of Imaging on just one charge
- Onboard Image Quality Analysis ensures you never retake an image
- Easy-to-Use Interface reduces the learning curve
- Lifetime access to the Prestige Studio offers functionality such as filters, montaging, and report generation



INFLAMMADRY



InflammaDry is the first rapid, in-office CLIA-waived test that detects elevated levels of MMP-9, an inflammatory marker that is consistently elevated in tears of patients with dry eye disease. InflammaDry is easily performed in 4 simple steps, minimally invasive, requires no special equipment, and accurately identifies patients with dry eye allowing for optimal treatment methods.



Circle No. 13



QUICKVUE ADENOVIRAL CONJUNCTIVITIS TEST



QuickVue Adenoviral conjunctivitis Test is the only rapid, in-office CLIA-waived test that detects all known serotypes of adenoviral conjunctivitis (pink eye). QuickVue is easy to perform in 4 simple steps, minimally invasive, requires no special equipment, and allows for proper diagnosis to help stop the spread of infection.



Circle No. 15



HDR-9000 DIGITAL REFRACTOR

Full feature, top-of-the-line digital refractor

The HDR-9000 exam package makes results easier to interpret for the examiner and patient.

Features include:

- Wi-Fi Wireless Communication
- Built-in printer
- Able to integrate with diagnostic devices
- Silent, fast, and flexible body
- Dual and Jackson cross-cylinder lens



Circle No. 12



HRK-9000A AUTO REF/KERATOMETER

Multi-diagnostic device, full auto refraction

Full spectrum of patient testing; Meibomian Gland Analysis, Tear Film Break-up Time, Subjective VA Glare Test, and more.

Additional features:

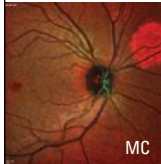

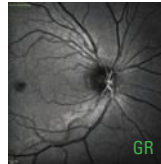
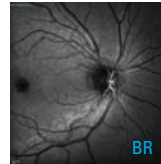
- Wavefront technology
- Wi-Fi Wireless Communication
- Contrast sensitivity, glare test
- Anterior segment pictures, export to PC
- Peripheral keratometry measurement
- IOL Mode
- Contact lens fitting guide
- Tablet to PC control, swiveling touch screen
- Auto-cutting printer

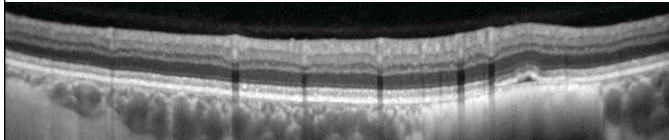


Circle No. 14




VISUALIZATION THAT **EMPOWERS**



Experience powerful images that empower you to do more for your patients and your practice. Experience Heidelberg Image Quality.



30

YEARS
EMPOWERING YOU

Circle No. 16

1-800-931-2230 • HeidelbergEngineering.com

OPHTHALMIC

Product Guide

Circle No. 17

Phoroptor® VRx

Digital Refraction System

A premium digital refraction experience at a safe distance.

Featuring the thinnest, most compact design, incredibly fast lens exchanges, motorized prisms, split cylinder lenses, and ultra-quiet operation, **Phoroptor® VRx** sets new standards in refraction. The ergonomic keypad features a multi-function control knob with unmatched feel and versatility, while the intuitive touch-screen interface has all the pre-programmed and programmable tests you'll need.

Phoroptor VRx provides a premium digital refraction experience at a safe distance, now from across the room or across the Internet. Phoroptor VRx is the only system that connects to all major brands of pretest devices and EMR platforms.

Designed and assembled in the USA



Circle No. 18

ClearChart® 4

Digital Acuity Systems

Pixel-perfect and purpose-built.

The family of ClearChart® Digital Acuity Systems are elegant, all-in-one, simple-to-use, and uniquely designed to meet all of your acuity testing needs with a wide selection of optotypes, and other special test charts.

The ClearChart family all feature a 24 inch, high resolution, LED backlit display that are lightweight, cool running and long-lasting. The **ClearChart® 4X** Enhanced Digital Acuity System, and the **ClearChart® 4P** Polarized Digital Acuity System are now available with **LEA SYMBOLS®** and **LEA NUMBERS®**. The intuitive user interface provides the best user experience of any digital acuity chart.

Designed and assembled in the USA



Ocular Response Analyzer® G3

Corneal Hysteresis: Measure Beyond Pressure.

Provide a more confident glaucoma risk assessment and a more personalized treatment approach.

Ocular Response Analyzer® is the only device that measures Corneal Hysteresis, a superior predictor of glaucoma progression. Corneal Hysteresis has consistently shown to be a more powerful predictor of, and strongly associated with, glaucoma progression, more so than key risk factors such as IOP and CCT.

Designed and assembled in the USA



Reichert® 7CR

Non-Contact Tonometer

A better pressure measurement with Corneal Response Technology®.

In 1972, Reichert® invented the non-contact tonometer (NCT), and continues to innovate tonometry with the clinically advanced and easy-to-use **Reichert® 7CR**.

Using patented Corneal Response Technology® which takes corneal biomechanics into account, Reichert 7CR provides Corneal Compensated IOP (IOPcc), a better pressure measurement.

Designed and assembled in the USA



Circle No. 19

Tono-Pen®

Handheld Tonometers

Reichert® Tono-Pen® has been the trusted choice of clinicians for over 30 years.

Tono-Pen® helps to provide essential care while keeping your patients and staff protected. Tono-Pen AVIA® applanation tonometer now with **Quick-Tap® Measurement Mode** is ready-to-use, calibration-free, and accurate – **with more confidence in fewer measurements.**

Tono-Pen is less sensitive to corneal centration, ensuring fast and accurate IOP measurements with minimal training.

Protect your Tono-Pen and patients with genuine, FDA cleared Reichert® **Ocu-Film® + Tip Covers.**

Designed and assembled in the USA



Circle No. 20

Ocu-Film® + Tip Covers

Tono-Pen® Tip Covers

Protect your Tono-Pen® Handheld Tonometer and your patients.

Genuine blue Reichert® **Ocu-Film® + Tip Covers** protect your Tono-Pen® Tonometers from dust and fluids, and help protect patients from the risk of cross contamination. Ocu-Film+ Tip Covers are single-use, sanitized, and easy-to-apply. Ocu-Film+ Tip Covers are FDA cleared and the only Reichert® approved tip covers for use with Tono-Pen Tonometers. Ocu-Film+ Tip Covers are available individually packaged in boxes of 150 or bulk packs of 600.



Circle No. 21

Circle No. 22

OPHTHALMIC

Product Guide

PACHMATE 2

DGH TECHNOLOGY INC.
THE ULTRASOUND SPECIALIST

- Globally Recognized as the Leading Handheld Pachymeter
- Easy, Fast and Accurate
- Proven Accuracy & Reproductivity
- Customizable Settings
- Rapid Bilateral Measurements
- Durable Portability
- User Friendly



(800) 722-3883
www.dghtechnology.com

Circle No. 23

CA-800 CORNEAL ANALYZER

Accurate, Full Examination of the Anterior Corneal Surface

- I-Map viewer software for PC
- Tear film breakup time
- Meibomian gland imaging




Topcon Healthcare (800) 223-1130
newsgram.topconmedical.com/ca800

Circle No. 24 **TOPCON** Healthcare


Circle No. 25

Alleviate With ZERVIAE™



ZERVIAE™ delivers the proven power of cetirizine, now targeted to the eyes! Formulated with Hydrella™, Zerviate is indicated for the treatment of ocular itching associated with allergic conjunctivitis.

Visit MyZerviate.com for more information.



eyeavance.com

ALADDIN BIOMETER / TOPOGRAPHER

One Step Ahead in Conventional and Premium IOL Calculation

- Combined comprehensive biometry and topography
- Latest IOL calculation formulas onboard
- Enhanced cybersecurity



Topcon Healthcare (800) 223-1130
newsgram.topconmedical.com/aladdintl

Circle No. 26 **TOPCON** Healthcare

NEUROLENS, INC.

Neurolens is the maker of the first and only spectacle lenses that provide patients relief from the discomfort of eye misalignment caused by today's increased near vision demands.

With nearly 65% of U.S. adults suffering painful symptoms when using digital devices, reading or doing detail work, the addressable market and practice opportunity are significant.

Neurolenses are proven effective in relieving the painful symptoms of eye misalignment.

- 93% of patients (n = 360) have responded positively to wearing Neurolenses after purchasing.

Neurolens partners only with independent eye care professionals.

Visit us at www.neurolenses.com

Circle No. 27




Neurolens, Inc. ▲ 949-339-5157
www.neurolenses.com

SL-D701 DIGITAL SLIT LAMP

Excellence in Optics and Enhanced Versatility

- Excellence in optics and enhanced versatility
- Bright and homogeneous LED illumination
- Digital ready for photo and video Incorporated
- Meibography capability*



Topcon Healthcare (800) 223-1130
newsgram.topconmedical.com/sld701

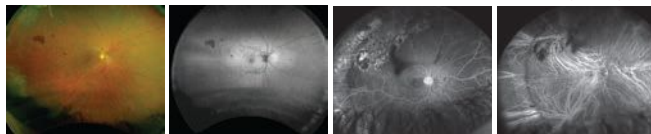
*When used with optional DC-4 camera attachment and BG-5 illuminator.

Circle No. 28 **TOPCON** Healthcare

OPHTHALMIC

Product Guide

Optos is Ultra-widefield Retinal Imaging



California

200° 3-in-1 **optomap®** color, autofluorescence, fluorescein angiography and indocyanine green image modalities. Capture, review and plan your treatment with *California*.

- Uncover critical information
- Help prevent vision loss
- Increase practice flow

What you can do in less than ½ second?
BDS@optos.com – 800-854-3039



Circle No. 29



WASHABLE ANTIBACTERIAL FACEMASK WITH REPLACEABLE FILTER

Reusable, washable, 99.99% antibacterial, facemask with 95% filtration offering 7 layers of protection. Our disposable filters will last 40 hours (the thinking was 5 days a week 8 hours a day).

The Facemask includes 5 filters.

\$19.95

Circle No. 30



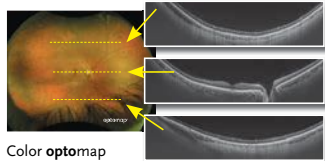
The Dry Eye Doctor ■ 470-374-5305
www.thedryeyedoctor.net

Are you ready for the only integrated UWF and swept-source OCT that can be guided to the far periphery?

Silverstone SS OCT

Silverstone is the most powerful tool yet for examining the retina. The only ultra-widefield retinal imaging device with integrated, UWF-guided swept-source OCT, *Silverstone* produces a 200° single-capture **optomap®** image in less than ½ second and enables guided OCT scanning across the retina and into the far periphery.

- Detailed examination of the retina-vitreous to sclera
- Pathology detection and management from macula through far periphery
- 23 mm OCT scan and 1050 nm OCT light source for deeper tissue penetration for clear, detailed choroidal imaging



Color **optomap** image with superior, central, and inferior line scans

Put *Silverstone* in your practice
BDS@optos.com – 800-854-3039



Circle No. 31



1 COMPANY. 11 PRODUCTS. COUNTLESS HELPED.

EyePromise® offers eye health nutrition options for macular health, dry eye, diabetic eye health, athletic performance, and screen time. Add vegetarian and vegan options, and virtually every patient is covered. Our custom programs and expert support ensure we fit seamlessly into your practice.

Find out how at eyepromise.com/partner or call 314-529-8200.

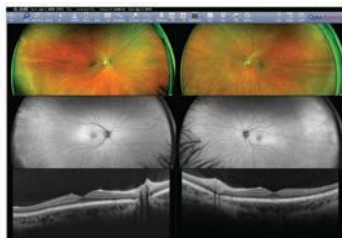


Circle No. 32

EyePromise ▲ (314) 529-8200
www.eyepromise.com

Monaco

The First Ultra-widefield Retinal Imaging Device with Integrated OCT



Unparalleled 200° ultra-widefield retinal imaging with 40° OCT

- **optomap®** and OCT are correlated to facilitate pathology examination
- Color, AF, and OCT images shown in a single, comprehensive view
- Fast, comfortable image acquisition improves clinic flow

Put *Monaco* in your practice
BDS@optos.com – 800-854-3039



Circle No. 33



Circle No. 34

SafeSite™
Sterile Single-Use Instruments

SAFER FOR YOUR PRACTICE

- Improved safety for patients and staff
- Sterile / No cross-contamination
- Reduced risk and liability

SAVE TIME & MONEY

- Reduced surgical prep times
- No reprocessing or sterilization
- No risk of loss or damage



Toll Free (USA) 800.354.7848 | info@stephensinst.com | stephensinst.com

OPHTHALMIC

Product Guide

AKR 750 AUTO KERATO-REFRACTOMETER

> Fast, accurate and fully automatic: an ideal solution for delegating patient measurement

- One-touch button measuring process for both eyes
- Ultra-precise measurements for even small diameter pupils
- Auto and manual measurement modes available
- Wide range of measures including peripheral keratometry with eccentricity
- Large 7.5" tilting screen for easy operation
- Automatic data transfer to APH 550



■ Unique "scanning window" with smooth and silent movement to create comfortable and stress-free exam atmosphere



phone: 855.393.4647
email: info@essilorinstrumentsusa.com
www.EssilorInstrumentsUSA.com

Circle No.35



VISION-R 800™ REFRACTION SYSTEM

> Give your patients the best of their vision

- Patented optical module allowing for 0.01D precision subjective refraction
- Refraction performed with the "Smart Tests" unique algorithms to optimize the exam
- Comfortable experience for the patient due to smooth, continuous power changes
- Results presented in simulated real-life conditions to enhance patient confidence



CONSOLE



CHART SCREEN: CS POLA 600



phone: 855.393.4647
email: info@essilorinstrumentsusa.com
www.EssilorInstrumentsUSA.com

Circle No.36



CORNEA 550 CORNEAL TOPOGRAPHER

> Specially designed for contact lens fitting and dry eye analysis

- High-resolution color camera
- Wide array of graphic representations
- Advanced qualitative and quantitative tear film assessment
- Dynamic and static capture pupillometry
- Independent screen to facilitate the sharing of results
- Newly-enhanced AnaEyes software to provide one graphical summary report



phone: 855.393.4647
email: info@essilorinstrumentsusa.com
www.EssilorInstrumentsUSA.com

Circle No. 37



RETINA 800 FUNDUS CAMERA

> Streamline retinal screening in your practice

- Fully-automatic retinal image capture allowing for easy screening and detection of retinal pathologies
- Fast and space-saving design
- Excellent image quality at your fingertips: clear and true-color 2.5mm pupil size capability; 90-degree mosaic imaging made easy
- Delegation-ready tablet-driven user interface: intuitive and direct connection with DICOM server



phone: 855.393.4647
email: info@essilorinstrumentsusa.com
www.EssilorInstrumentsUSA.com

Circle No. 38



WAM 700+ WAVEFRONT ABERROMETER

> Fully-automatic for complete anterior chamber analysis and visual need assessment

- Fast, effective, and space-saving
- 7 detailed tests in 90 seconds; both eyes
- Key measurements: Wavefront aberrations, pachymetry, NCT, topography, ARK and more
- Simple to navigate with large touch screen



phone: 855.393.4647
email: info@essilorinstrumentsusa.com
www.EssilorInstrumentsUSA.com

Circle No. 39



OCT 500 ADVANCED ROBOTIC OCT

> Optical coherence tomography with integrated fundus imaging

- Superb OCT technology ready for delegation
- Fully-automatic operation with follow-up scan function
- True-color fundus photography
- Extended range of analysis function for the pupil and the macula
- Compact and space-saving design



phone: 855.393.4647
email: info@essilorinstrumentsusa.com
www.EssilorInstrumentsUSA.com

Circle No. 40



OPHTHALMIC

Product Guide

DEBMED PRODUCTS

Debmed hand hygiene products are formulated to achieve the highest levels of clinical effectiveness, kill a broad spectrum of micro-organisms, and are kind to both user and environment. Mild enough to be used in high frequency healthcare environments and allow staff to follow best practices and increase hand hygiene compliance.

Shop your favorite Debmed products at Ophthalmics, Inc.



Circle No. 41

Ophthalmics, Inc. ▲ 833-568-4016
www.shophthalmics.com

ASTREEA® PEDAL HAND SANITIZER DISPENSER

Developed in a European aerospace factory, the Astreea® pedal hand sanitizer dispenser meets the highest engineering and quality standards.

- Medical grade stainless steel
- Pedal operated to reduce contamination
- Universal reservoir uses your preferred liquid or gel hand sanitizer
- Reservoir window to quickly check sanitizer level
- No batteries, assembly, or installation required
- Aesthetically enhance any office or practice
- 5 sizes available



Circle No. 42

Ophthalmics, Inc. ▲ 833-568-4016
www.shophthalmics.com

POST-CATARACT AND POST-REFRACTIVE KITS BY TECFEN

Post-Cataract and Post-Refractive kits by Tecfen simplify the process of providing your patients with the post operative items needed to heal after surgery. Our kits are customizable to your needs.

Choose from:

- Sunglasses
- Transpore or micropore tape
- Single or dual eyeshields
- Sterile eye pads
- Nylon zipper bag or plastic drawstring bag



Find all of your post-operative kit needs at Ophthalmics, Inc.



Circle No. 43

Ophthalmics, Inc. ▲ 833-568-4016
www.shophthalmics.com

BOTANif SANITIZER

BOTANif sanitizer utilizes 80% ethyl alcohol as the active ingredient that has been denatured, diluted with distilled and filtered water, then enhanced with glycerol and hydrogen peroxide that elevates the anti-microbial action of the product. Our ingredients are not shrouded in secrecy. We have natural products, recommended by professionals for professionals.

The Professional Advantage.

PURE. TESTED.. PROVEN...



Available at Ophthalmics, Inc.



Circle No. 44

Ophthalmics, Inc. ▲ 833-568-4016
www.shophthalmics.com

TECFEN MEDICAL PERSONAL PROTECTIVE EQUIPMENT

Introducing Tecfen Medical Personal Protective Equipment (PPE)

Featured Item: Professional Face Shields, Offered in Three Styles (Standard and XS styles shown)

Complete Fluid Protection for Face and Eyes

Latex Free

Anti-Fog Coating

Tecfen Medical manufactures Precision Ophthalmic Products®, including Ophthalmic Surgical Disposables, Post Operative Products, and Personal Protective Equipment.

Available at Ophthalmics, Inc.



Circle No. 45

Ophthalmics, Inc. ▲ 833-568-4016
www.shophthalmics.com

TECFEN MEDICAL PRE-LOADED PUNCTUM PLUGS

Introducing Tecfen Medical Pre-Loaded Punctum Plugs

Long-term occlusion therapy to treat symptoms associated with dry eye disease

Easy insertion and predictable placement

Tecfen Medical manufactures Precision Ophthalmic Products®, including Ophthalmic Surgical Disposables, Post Operative Products, and Personal Protective Equipment.

Available at Ophthalmics, Inc.



Circle No. 46

Ophthalmics, Inc. ▲ 833-568-4016
www.shophthalmics.com

OPHTHALMIC

Product Guide

MARKET LEADING INDIRECTS

Circle No. 47



- Interchangeable LED or xenon illumination
- Lightweight Slimline lithium polymer battery
- Wide range of filters & apertures
- Exclusive to Vantage Plus:
 - Intelligent Optics
 - HiMag™ lens: additional 1.6x magnification allows for superb stereoscopic images

Keeler
— A world without vision loss —

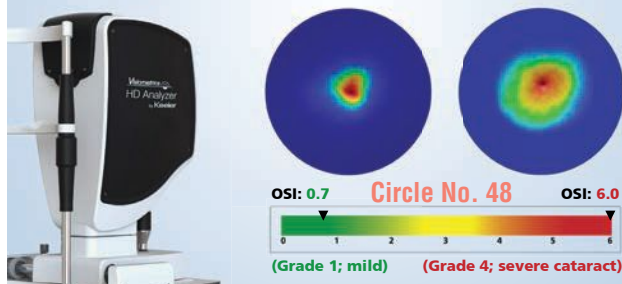
Contact us for pricing & more information
800.523.5620 // 610.353.4350 // KEELERUSA.COM

A Halma company

THE HD ANALYZER

A standard for cataract, refractive, & dry eye assessment

1. Choose the best surgery & outcome for your patient using objective OSI.
2. Assess dry eye & meibomian gland imaging using objective OSI.



Keeler
— A world without vision loss —

Contact us for pricing & more information
800.523.5620 // 610.353.4350 // KEELERUSA.COM

A Halma company

EASY-TO-USE PLATFORM

4SIGHT®

- Combines A-Scan®, UBM®, B-Scan®, and Pachymeter® into one platform
- Easy data transfer between modalities, including DICOMSM, for higher patient throughput
- Unsurpassed accuracy and image quality



Circle No. 49

Keeler
— A world without vision loss —

Contact us for pricing & more information
800.523.5620 // 610.353.4350 // KEELERUSA.COM

A Halma company

THE BEST OF BOTH WORLDS

AccuPen®:

- Portable handheld tonometer
- Micro strain gauge provides precise IOP measurements with minimal calibration needed

PachPen®:

- Portable handheld pachymeter **Circle No. 50**
- 65 MHz sampling rate ensures precise measurements
- Digital signal analysis eliminates the need for calibration and only measures when properly aligned



Keeler
— A world without vision loss —

Contact us for pricing & more information
800.523.5620 // 610.353.4350 // KEELERUSA.COM

A Halma company



Free air with the TonoCare

No pins or disposables = no ongoing costs.

Circle No. 51

Keeler

Contact us for pricing & more information
800.523.5620 // 610.353.4350 // KEELERUSA.COM

A Halma company

PORTABLE SLIT LAMPS

PSL Classic (left):

- Keeler Optics
- 10x // 16x magnification
- Docking station and direct inline charging

PSL One (right):

- Keeler Optics
- 10x magnification
- Direct inline charging

Circle No. 52



Keeler
— A world without vision loss —

Contact us for pricing & more information
800.523.5620 // 610.353.4350 // KEELERUSA.COM

A Halma company

OPHTHALMIC

Product Guide

FORESEEHOME AMD MONITORING PROGRAM



The progression from dry to wet AMD can occur rapidly and lead to severe vision loss if left undiagnosed and untreated. The ForeseeHome® AMD Monitoring Program is a home-based monitoring program supporting earlier detection of wet AMD in intermediate dry AMD patients, allowing doctors to help preserve patients' functional vision with earlier treatment.

Circle No. 53

ForeseeHOME™
AMD Monitoring Program

BY NOTAL VISION™

Notal Vision | (855) 600 3112
www.ForeseeHome.com/HCP

ZEISS PRE-TEST SUITE

Provides reliable measurements for profound consultation and a high-level of patient care.

- Wavefront aberrometer/topographer
- Autorefractor/keratometer
- Non contact tonometer
- Hand held retinal camera
- Wavefront lensmeter



Circle No. 54

ZEISS

Carl Zeiss Vision Inc. ▲ 1-800-358-8258
www.zeiss.com/equipment

IMPROVE EYELID HEALTH IN 3 EASY STEPS



The Bruder Hygienic Eyelid Care Kit makes it easier than ever to maintain wellness and manage dry eye disease.



Circle No.55

To learn more, call 888-827-8337
or visit www.bruder.com/video-kit

Bruder
Better. By Design.

ZEISS EXAM LANES

Offer complete solutions for subjective refraction and world class optics

- Refractors – digital and manual
- Acuity systems
- Chairs and stands
- Slit Lamps – tower and integrated
- Tonometers



Circle No. 56

ZEISS

Carl Zeiss Vision Inc. ▲ 1-800-358-8258
www.zeiss.com/equipment

IBEX WIRELESS INDIRECT

Break through the limitations of wired examinations.

Smart engineering, stunning tissue clarity and dual-lithium rechargeable batteries enable you to stay unplugged all day, every day -- even for weeks without charging!



Circle No. 57

Only \$1,895 www.ibexeye.com
A Trevi Technology 614-754-7175

ZEISS DIGITAL FITTING AND CONSULTATION

ZEISS VISUFIT 1000

- 3D centration quickly and precisely, nine cameras with 45 million points of reference.
- Fixation target for vergence control.
- Pupil center or reflex targeting.



Circle No. 58

ZEISS

Carl Zeiss Vision Inc. ▲ 1-800-358-8258
www.zeiss.com/equipment

OPHTHALMIC

Product Guide

BQ 900® LED Slit Lamp

Fully integrated imaging solution

Choose the BQ 900 LED for advanced microscopy. The BQ 900 is powered by a long-lasting LED diode that offers exceptional detail and depth of field. It is the ultimate slit lamp due to its flexible modular design. The IM 900 imaging module offers a fully integrated imaging solution with unique features and technology. Other optional accessories include Teaching Scope, Inclined Eyepieces, Yellow Filter, Stereo Variator, and Beam Splitter.



Circle No. 59

HS HAAG-STREIT
USA

800.787.5426
haag-streit-usa.com

BI 900® LED Slit Lamp

Simplified operation meets high reliability.

Equipped with an improved version of the BM 900 microscope, an enhanced illumination system and traditional high-precision mechanics, the BI 900 is the ideal successor to the BM 900. The BI 900 slit lamp combines simplicity and reliability in a modern system which offers integrated digital imaging as an option.



Circle No. 60

HS HAAG-STREIT
USA

800.787.5426
haag-streit-usa.com

Reliance FX-920®

The standard for chair design

The FX-920 sets the standard for design while retaining the core value of all Reliance products - rugged durability. All surfaces of the chair are designed to support a patient's entire weight. Ergonomic full power tilt is efficient for the practitioner and comfortable for the patient. A full complement of controls is available on both sides of the chair, while the detached dual footswitch adds flexibility.



Circle No. 61

HS RELIANCE
INTERNATIONAL

800.735.0357
reliance-medical.com

LENSTAR® APS Optical Biometer

Advanced biometry—better outcomes

The LENSTAR LS 900 with Automated Positioning is all you need for faster, more efficient biometry. Its easy mechanical tracking minimizes user delay and error, delivering more reliable results and a more comfortable patient experience. The dual zone keratometry with 32 measurement points provide precise K values, essential for planning toric lens implantation. With its integrated Olsen and Barrett formulas, as well as exclusive availability of the Hill-RBF Method 2.0 for IOL calculation, the LENSTAR provides the user with the best possible IOL prediction.



Circle No. 62

HS HAAG-STREIT
USA

800.787.5426
haag-streit-usa.com

Octopus 600®

Early diagnosis and standard white-on-white perimetry in one device

The Octopus 600, with EyeSuite Progression Platform, extends Haag-Streit's product range of visual field analyzers, combining the Pulsar method for early glaucoma detection and standard White/White perimetry for long term follow-up in one compact and stand-alone device. Unique fixation control for blinking, pupil position, darting and forehead contact, yields more reliable results, and with our Tendency Oriented Perimetry (TOP strategy), thresholds are performed in 2 ½ minutes.



Circle No. 63

HS HAAG-STREIT
USA

800.787.5426
haag-streit-usa.com

Octopus 900®

Versatility PLUS connectivity!

The Octopus 900, with EyeSuite Progression Platform, is the most versatile perimeter available. The Octopus 900 features more options for reliable testing, including: static White/White, Blue/Yellow, Red/White, Flicker, Low Vision and computer-assisted true Goldmann Kinetic, TOP Strategy for thresholds in 2-1/2 minutes and our unique fixation control. EyeSuite, the industry's most advanced software for progression analysis, includes the first perimetric analysis to combine structure and function with real-time interactive access to all perimetric data with easy networking and free viewing stations.



Circle No. 64

HS HAAG-STREIT
USA

800.787.5426
haag-streit-usa.com

OPHTHALMIC

Product Guide



Doctor directed, at-home dry eye relief

Circle No. 65

Dry eye relief ... in the blink of an eye

The doctor prescribed at-home treatment for dry eye

Effectively treats Evaporative Dry Eye by stimulating and rejuvenating the Meibomian Glands back to a healthier state.

Creates an additional revenue stream for the practice without impacting overhead costs or disrupting other in-office treatments



Dry eye relief...in the blink of an eye

For more information contact: NuSightMedical.com or (833) 368-5437

LACRIVERA - VERAPLUG™ FLEXFIT™

The FlexFit™ Punctal Occluder by Lacrivera offers a fresh approach in bringing greater value to your dry eye practice. The FlexFit nose technology, designed to collapse when inserted, allows for simple sizing, easy insertion, superior retention and excellent patient comfort. Offered in 4 sizes (XS, S, M, L), the FlexFit is available in sterile pre-loaded and nonsterile bulk packages. For more information on the VeraPlug FlexFit and Lacrivera's dry eye line visit Lacrivera.com. Lacrivera is a division of Stephens Instruments.



Circle No. 66

LACRIVERA ▲ 855-857-0518
www.Lacrivera.com

THERE'S RELIEF AND THEN THERE'S RELIEVA™



The only family of products in the U.S. with CMC, HA (inactive ingredient), and Hydrocell™ technology for dry, irritated eyes.

Circle No. 67

refreshbrand.com/doc



© 2020 Allergan. All rights reserved. All trademarks are the property of their respective owners. REF120579-v2 06/20



DEXYCU™

(dexamethasone intraocular suspension) 9%

Circle No. 68

Order DEXYCU today.

NDC Code: 71879-001-01

Unique Permanent J-Code: J1095

Learn more at DEXYCU.com



US-DEX-1900279 12/2019

Circle No. 69

TOBRADEX® ST TURN ON RELIEF!



Built on the trusted tobramycin/dexamethasone combination, enhanced with XanGen™ suspension technology, TOBRADEX® ST delivers rapid relief from symptoms of blepharitis and blepheroconjunctivitis.

Visit MyTobradexST.com for more information.



eyeavance.com

FIND YOUR WAY FORWARD

Circle No. 70



Find opportunity in change.

AdaptDx Pro™ guided by Theia™ helps make it possible.

AdaptDx PRO
Guided by Theia™

See how you can change the future for your patients and practice at DxAMDnow.com

maculogix.com/adaptDx

