

# OPHTHALMIC

## Product Guide

Special Advertising Section



### Dear Doctor,

Review of Optometry is pleased to offer you this preview of many exciting new products now available in the ophthalmic marketplace.

Here, you'll learn about innovative new medications, diagnostic instruments, corrective lens options, in-office laboratory equipment and many other products. There are two ways to obtain more information on a particular product:

1. Go to [www.reviewofoptometry.com](http://www.reviewofoptometry.com), click Supplements, Product Guide digital edition, and then follow the prompts.
  2. Circle the corresponding number on the enclosed reader service card for each product of interest. Fill in your name and address, and return the postage-paid card to us. Educational materials will be sent directly to you by the individual companies.
- Thank you for your interest and support!



**MGD?**  
**MEET MEGA-3**

Sell **MEGA-3** and more from REFRESH® in your office.  
Call **833-246-4393**

**Refresh Direct**  
a division of ALLERGAN | DIRECT  
[refreshbrand.com/doc](http://refreshbrand.com/doc)

**Circle No. 1**

© 2018 Allergan. All rights reserved. All trademarks are the property of their respective owners. REF107962\_v2 01/18



**Free air with the TonoCare**  
No pins or disposables = no ongoing costs.

**Circle No. 2**

**Keeler** Contact us for pricing & more information  
800.523.5620 // 610.353.4350 // [KEELERUSA.COM](http://KEELERUSA.COM)

A **Halma** company

**FREE INVENTORY SWAP** **Circle No. 3**

If you are unhappy with a competitive product, or one is no longer available to buy for your patients - we can help. Lunovus is a physician-owned company with a long-standing history of partnering with doctors. Join practitioners across the country who have adopted a new standard of care with Blephadex®.



**BLEPHADEX®**  
THE NEW STANDARD OF EYE CARE

- ✓ **Superior Formula:** Patented Blend of Powerful Tea Tree Oil & Soothing Coconut Oil
- ✓ **Proven Results:** A Complete Solution for Blepharitis, Demodex, Dry Eye & MGD
- ✓ **Improved Compliance:** Affordable for Patients, with No Burn and No Foul Scent

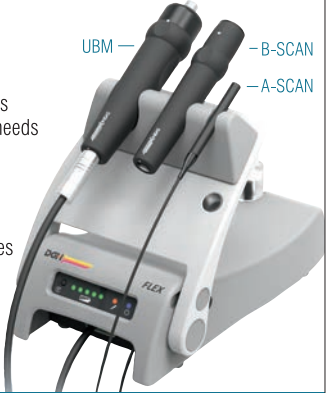
**LUNOVUS**  
CALL **205-285-3875**  
TO SWAP YOUR INVENTORY TODAY

**YOU PAY \$0 FOR BLEPHADEX®**  
**WE COVER ALL SHIPPING**

**The New Scanmate Flex** **Circle No. 4**

**A-Scan / B-Scan / UBM**

- Ophthalmic ultrasound platform that is configurable to all your examination needs
- Improved B-scan probe design for better reliability
- Utilizes AC or internal rechargeable battery power for portability
- Contact and Immersion A-Scan modes
- UBM capabilities with ClearScan®
- Area, angle and length measurement and annotation tools
- Easy export video, image and PDF files for EMR/EHR use



Serving Eye Care Professionals Since 1982

**DGH TECHNOLOGY, INC.**  
**THE ULTRASOUND SPECIALIST**

**(800) 722-3883**  
[www.dghtechnology.com](http://www.dghtechnology.com)

Requesting product information is now fast and easy! Go to [www.reviewofoptometry.com](http://www.reviewofoptometry.com), click Supplements, Product Guide digital edition and follow the prompts to request product information.

# OPHTHALMIC

## Product Guide

### TOPCON ALADDIN BIOMETER / TOPOGRAPHER

One step ahead in conventional and premium IOL calculation.

- Combined comprehensive biometry and topography
- Latest IOL calculation formulas on board
- Enhanced cybersecurity



Circle No. 5

Topcon Medical Systems ▲ (800) 223-1130  
[newsgram.topconmedical.com/aladdintl](http://newsgram.topconmedical.com/aladdintl)

### TOPCON CA-800 CORNEAL ANALYZER

Accurate, full examination of the anterior corneal surface.

- I-Map viewer software for PC
- Tear film breakup time
- Meibomian gland imaging



Circle No. 6

Topcon Medical Systems ▲ (800) 223-1130  
[newsgram.topconmedical.com/ca800](http://newsgram.topconmedical.com/ca800)

### TOPCON SL-D701 SLIT LAMP

Excellence in optics and enhanced versatility.

- Bright and homogeneous LED illumination
- Digital ready for photo and video
- Incorporated meibography capability\*

*\*When used with optional DC-4 camera attachment and BG-5 illuminator.*



Circle No. 7

Topcon Medical Systems ▲ (800) 223-1130  
[newsgram.topconmedical.com/sld701](http://newsgram.topconmedical.com/sld701)

### TOPCON KR-800PA AUTO KERATO-REFRACTOR

Enhanced auto kerato-refractometer with corneal mapping.

- Patented Rotary Prism technology ensures accurate, repeatable measurements
- Semi-automatic alignment with automated measurements
- i-Map for KR viewer software for PC



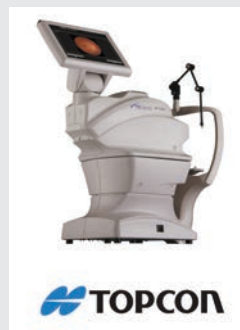
Circle No. 8

Topcon Medical Systems ▲ (800) 223-1130  
[www.topconmedical.com/products/kr800pa.htm](http://www.topconmedical.com/products/kr800pa.htm)

### TOPCON TRC-NW400 NON-MYDRIATIC RETINAL CAMERA

Space saving, fully automated, easy-to-use retinal camera for anterior and posterior imaging.

- Fully automated operation (auto focus, auto capture) and automatic transfer from eye to eye
- 10" touch screen monitor for instrument control and image display
- DICOM compliant



Circle No. 9

Topcon Medical Systems ▲ (800) 223-1130  
[newsgram.topconmedical.com/trcnw400](http://newsgram.topconmedical.com/trcnw400)

### TOPCON CV-5000S COMPUTERIZED PHOROPTER

- Proven quality in a modern compact design
- Complete paperless 21-point refraction output to EMR/EHR
- Available with M&S Technologies acuity charts



Circle No. 10

Topcon Medical Systems ▲ (800) 223-1130  
[www.topconmedical.com/products/cv5000s.htm](http://www.topconmedical.com/products/cv5000s.htm)

# OPHTHALMIC

## Product Guide

**G-6 GONIO**  
**360° VIEWS**  
of the Trabecular Meshwork



### SPECIFICATIONS

Circle No. 11

**6 x 63°**  
MIRROR ANGLE

**1.0x**  
IMAGE MAG

**1.0x**  
LASER SPOT

- Eliminate Lens Rotation Resulting in Quicker Examinations
- Contact Design Allows Quick & Easy Gonioscopy
- Use Indentation to Examine Closed Angle Glaucoma Suspects

**VOLK** (800) 345-8655 | volk.com

**PICTOR<sup>+</sup> PLUS**  
**PORTABLE**  
Ophthalmic Camera



Easily screen patients wherever your practice may take you with the hand-held Pictor Plus.

- Non-Mydriatic Imaging Capability
- Nine Fixation Targets Allow Dynamic Retinal Imaging
- Pays for Itself in as Little as Four Months
- Easy-to-Use Interchangeable Modules Allow Imaging of both Anterior & Retinal Structures

Circle No. 12

**VOLK** (800) 345-8655 | volk.com

**Super Pupil<sup>®</sup> XL**  
**SMALL PUPIL**  
Pan-Retinal Exams



### SPECIFICATIONS

Circle No. 13

**103° / 124°**  
FIELD OF VIEW

**0.45x**  
IMAGE MAG

**2.2x**  
LASER SPOT

- Wide Field Imaging through Pupils as Small as 1-2 mm
- Ideal for Diabetic Patients with Miotic Eyes
- Excellent for Undilated Retinal Screening

**VOLK** (800) 345-8655 | volk.com

**Digital Wide Field<sup>®</sup>**  
**WIDEST FIELD**  
for Retinal Exams



### SPECIFICATIONS

Circle No. 14

**103° / 124°**  
FIELD OF VIEW

**0.72x**  
IMAGE MAG

**1.39x**  
LASER SPOT

- Widest Field of View, out to the Ora Serrata
- High Resolution Imaging, even through Small Pupils
- 40% Wider Field of View than the Classic 90D

**VOLK** (800) 345-8655 | volk.com

**NuLids<sup>®</sup>**  
*Doctor directed, at-home dry eye relief*

**Dry eye relief ... in the blink of an eye**  
The doctor prescribed at-home treatment for dry eye

Effectively treats Evaporative Dry Eye by stimulating and rejuvenating the Meibomian Glands back to a healthier state.

Creates an additional revenue stream for the practice without impacting overhead costs or disrupting other in-office treatments



**NuSight Medical<sup>®</sup>**  
*Dry eye relief...in the blink of an eye*

For more information contact: NuSightMedical.com or (833) 368-5437

Circle No. 15

Circle No. 16

RECOMMEND

**THE FIRST FDA-ACCEPTED**  
**ANTIMICROBIAL**  
EYELID CLEANSER

**new!**

**KILLS 99.9% OF BACTERIA IN 30 SECONDS**

- ✓ Advanced Hypochlorous Acid (0.01%) formula for superior cleansing
- ✓ Cleanses away bacteria and irritants
- ✓ pH balanced formula is gentle on eyelids
- ✓ Effective daily eyelid and eyelash hygiene
- ✓ No rinse - soap free



Now available without a prescription at Walgreens, CVS Pharmacy, Amazon, Rite Aid and other retailers nationwide

# OPHTHALMIC

## Product Guide

### Phoroptor® VRx

#### Digital Refraction System

**A premium refraction experience from the most advanced Phoroptor® ever.**

Featuring the thinnest, most compact design, incredibly fast lens exchanges, motorized prisms, split cylinder lenses, and ultra-quiet operation, **Phoroptor® VRx** sets new standards in refraction. The ergonomic keypad features a multi-function control knob with unmatched feel and versatility, while the intuitive touch-screen interface has all the pre-programmed and programmable tests you'll need.

Phoroptor® VRx boasts effortless integration with EMR systems, and unlike other digital refraction systems, is compatible with a comprehensive list of pre-test and acuity devices from both Reichert® and other leading manufacturers.

Designed and assembled in the USA 

**Circle No. 17**



**Reichert**  
TECHNOLOGIES

Passionate About Eye Care. American Innovation.

reichert.com • 888-849-8955

**AMETEK**


### Ultramatic RX Master™ Phoroptor®

**Since 1921, the unmistakable feel of quality.**

The original and world's finest refracting instrument. Phoroptor® continues to be the industry standard after more than 90 years, offering its renowned mechanical quality and craftsmanship, optical quality, accuracy, and reliability.

Reichert **Ultramatic RX Master™ Phoroptor®** and **Ultramatic RX Master™ Illuminated Phoroptor®** are the only refracting instruments completely designed and manufactured in the United States. Each Phoroptor® is made of 1,000 pieces, assembled by hand in our Buffalo, New York factory.

Ultramatic RX Master™ Illuminated Phoroptor® features a patented, maintenance-free, cool-running, energy-efficient LED design.

Designed and assembled in the USA 

**Circle No. 18**



**Reichert**  
TECHNOLOGIES

Passionate About Eye Care. American Innovation.

reichert.com • 888-849-8955

**AMETEK**

### ClearChart® 4

#### Digital Acuity Systems

**Pixel-perfect and purpose-built.**

The all-new family of ClearChart® Digital Acuity Systems are elegant, all-in-one, simple-to-use, and uniquely designed to meet all of your acuity testing needs with a wide selection of optotypes, and other special test charts.

The **ClearChart® 4** Digital Acuity System, **ClearChart® 4X** Enhanced Digital Acuity System, and **ClearChart® 4P** Polarized Digital Acuity System all feature a new 24 inch, high resolution, LED backlit display that are lightweight, cool running and long-lasting. The intuitive user interface provides the best user experience of any digital acuity chart.

Designed and assembled in the USA 

**Circle No. 19**



**Reichert**  
TECHNOLOGIES

Passionate About Eye Care. American Innovation.

reichert.com • 888-849-8955

**AMETEK**

### SightChek™

#### Digital Phoroptor®

**Combining technology, simplicity, and value.**

Increase efficiency and patient throughput with the speed and simplicity of **SightChek™**. Designed to combine technology and value, SightChek™ enables you to bring the power of digital refraction into your practice at an affordable price.

For over 90 years, Phoroptor® has been at the heart of your exam lane. Trust Reichert®, The Phoroptor® Company, for the best possible refraction experience.

**Circle No. 20**



**Reichert**  
TECHNOLOGIES

Passionate About Eye Care. American Innovation.

reichert.com • 888-849-8955

**AMETEK**

### LensChek™ Pro and LensChek™ Plus

#### Digital Lensometers

**Combining technology, simplicity, and value.**

The all-new **LensChek™ Pro** Digital Lensometer® with PD+UV and **LensChek™ Plus** Digital Lensometer® combine technology with simplicity at the core of your exam.

The new, compact, modern design and intuitive user interface offers the easiest lensmeter user experience available. For example, when the target is aligned with the correct optical center, readings can be automatically "locked-in" ensuring fast, repeatable, and reliable lens measurement. Both devices feature a brilliant 5.7 inch color LCD display.

LensChek™ Pro additionally features UV transmittance and PD measurement.

**Circle No. 21**



**Reichert**  
TECHNOLOGIES

Passionate About Eye Care. American Innovation.

reichert.com • 888-849-8955

**AMETEK**

### OptoChek™ Plus

#### Auto Refractor + Keratometer

**Combining technology, simplicity, and value.**

The all-new **OptoChek™ Plus** Auto Refractor + Keratometer, combines technology with simplicity at the core of your exam. The compact, modern design, and intuitive user interface of the OptoChek™ Plus offers the easiest user experience available for measuring objective spherical and cylindrical refractive errors as well as keratometry.

An innovative reliability index gives you confidence in obtained readings. Scotopic Pupil Size and Photopic Pupil Size modes adjust illumination to accommodate different lighting conditions. OptoChek™ Plus features a brilliant 5.7 inch color, touch LCD display, data output options, and a measurement range of Sphere: -30 D to +22 D, Cylinder: 0 D to ±10 D, Axis: 0° to 180°.

**Circle No. 22**



**Reichert**  
TECHNOLOGIES

Passionate About Eye Care. American Innovation.

reichert.com • 888-849-8955

**AMETEK**

# OPHTHALMIC

## Product Guide

### Ocular Response Analyzer® G3

**Corneal Hysteresis: A more objective predictor of glaucoma progression.**

**Provide a more confident glaucoma risk assessment and a more personalized treatment approach.**

Ocular Response Analyzer® is the only device that measures Corneal Hysteresis, a superior predictor of glaucoma progression. Corneal Hysteresis has consistently shown to be predictive of, or strongly associated with, glaucoma progression, and more powerfully so, than key indicators such as IOP and CCT.

**CPT® Code 92145 for Corneal Hysteresis**

Designed and assembled in the USA 

**Circle No. 23**



**Reichert**  
TECHNOLOGIES

Passionate About Eye Care. American Innovation.

reichert.com • 888-849-8955

**AMETEK**

### Reichert® 7CR and Reichert® 7

Non-Contact Tonometers

**The most advanced and the easiest to use.**

In 1972, Reichert® invented the non-contact tonometer (NCT), and after 45 years continues to offer the most accurate, trusted, and complete line of NCTs.

From the effortless one-button simplicity of Reichert® 7 to the clinically advanced Reichert® 7CR, which provides Corneal Compensated IOP (IOPcc), Reichert has a non-contact tonometer that suits your needs.

Designed and assembled in the USA 



**Reichert**  
TECHNOLOGIES

Passionate About Eye Care. American Innovation.

reichert.com • 888-849-8955

**AMETEK**

**Circle No. 24**

### Tono-Pen®

Handheld Tonometers

**Reichert® Tono-Pen® has been the trusted choice of clinicians for over 30 years.**

Introducing Tono-Pen AVIA® applanation tonometer now with Quick-Tap™ Measurement Mode. The same ready-to-use, calibration-free, and accurate operation – now with more confidence in fewer measurements – making Tono-Pen AVIA® the most advanced Tono-Pen® yet.

Tono-Pen® is less sensitive to corneal centration, ensuring fast and accurate IOP measurements with minimal training.

Protect your Tono-Pen and patients with genuine, FDA cleared Reichert® Ocu-Film® + Tip Covers.

Designed and assembled in the USA 

**Circle No. 25**



**Reichert**  
TECHNOLOGIES

Passionate About Eye Care. American Innovation.

reichert.com • 888-849-8955

**AMETEK**

### Ocu-Film® + Tip Covers

Tono-Pen® Tip Covers

**Protect your Tono-Pen® Handheld Tonometer and your patients!**

Genuine brand Ocu-Film® + Tip Covers protect your Tono-Pen® tonometers from dust and fluids, and help protect patients from the risks of cross contamination. Ocu-Film® + Tip Covers are sanitized, easy to apply, and are the only Reichert® approved tip covers for use with Tono-Pen® Tonometers. The disposable, single use blue tip covers are available individually packaged in boxes of 150 or bulk packs of 600.



**Reichert**  
TECHNOLOGIES

Passionate About Eye Care. American Innovation.

reichert.com • 888-849-8955

**AMETEK**

**Circle No. 26**

### iPac®

Handheld Pachymeter.

**Intuitive, inspired pachymetry.**

Reichert® iPac® is the most feature-rich handheld pachymeter available. It offers Bluetooth® wireless connectivity, one-button navigation, a rotating color LCD screen, and a rechargeable lithium-ion battery.

iPac® is backed by an industry-leading three-year warranty.

Designed and assembled in the USA 

**Circle No. 27**



**Reichert**  
TECHNOLOGIES

Passionate About Eye Care. American Innovation.

reichert.com • 888-849-8955

**AMETEK**

### Xcel® Slit Lamps

Xcel® 455 and Xcel® 255

**Where performance and value converge.**

The Xcel® family of slit lamps offer high quality optics for image clarity and detail. Engineered for easy and smooth maneuverability, Xcel® Slit Lamps come in two traditional designs with 3 or 5 times magnification (within the range of 6X, 10X, 16X, 25X, and 40X) and multiple filter options including neutral density.

Reichert® CT100 and CT210 contact applanation tonometers are available to complement your choice of slit lamp.



**Reichert**  
TECHNOLOGIES

Passionate About Eye Care. American Innovation.

reichert.com • 888-849-8955

**AMETEK**

**Circle No. 28**

# OPHTHALMIC

## Product Guide

**STEREO OPTICAL**

### STEREOTESTS AND COLOR TESTS

**Gold Standard**

- Original Stereo Fly
- Randot®
- Stereo Butterfly
- **NEW** Fly, Randot, and Butterfly stereotests including LEA Symbols
- Original Ishihara Color Tests: 14, 24, or 38 plates



Stereo Optical • (800) 344-9500  
sales@StereoOptical.com  
www.StereoOptical.com

**Circle No. 29**

**STEREO OPTICAL**

### FUNCTIONAL VISION ANALYZER

**Contrast Sensitivity Testing for Vision Quality Evaluation**

- Ideal for pre- and post-op cataract, refractive surgery and clinical trials
- Optional software to illustrate real-world image of patient results



Stereo Optical • (800) 344-9500  
sales@StereoOptical.com  
www.StereoOptical.com

**Circle No. 30**

**STEREO OPTICAL**

### OPTEC® 5000 SERIES VISION SCREENERS

**Comprehensive vision screening in minimal time in a controlled environment**

- Quick, repeatable and accurate
- Lightweight and portable
- No training or certification needed
- The 5000P and 5500P include a peripheral test.



Stereo Optical • (800) 344-9500  
sales@StereoOptical.com  
www.StereoOptical.com

**Circle No. 31**

**STEREO OPTICAL**

### OPTEC® PLUS SMART VISION SCREENER

**Pretesting to save valuable time in the exam room**

- Comprehensive library of tests
- Easy-to-use interface
- Randomized tests and customizable protocols
- Auto-mode to allow for self-administration
- Digital recording of results



Stereo Optical • (800) 344-9500  
sales@StereoOptical.com  
www.StereoOptical.com

**Circle No. 32**

**Introducing... Monaco**



The **ONLY** Ultra-widefield Retinal Imaging Device with Integrated OCT



6 image, multi-modal view, including **optomap color**, **optomap af**, and **OCT** - in less than two minutes

Unparalleled 200° ultra-widefield retinal imaging with 40° OCT

- Ultra-widefield **optomap** images and five OCT scan types
- Color, AF, and OCT images shown in a single, comprehensive view
- Fast, comfortable image acquisition improves clinic flow

**Put Monaco in your practice BDS@optos.com – 800-854-3039**

**Circle No. 33**



**optos**  
Building The Retina Company  
optos.com

**HIGH QUALITY GERMAN STAINLESS STEEL OFFICE BASED INSTRUMENTS**

**Meibomian Gland Expressor Forceps** – expression made easy and comfortable.



**Epilation Forceps** – Designed with a non-slip jaw for easy eyelash removal.



**Circle No. 34**



The Dry Eye Doctor, Inc. ▲ (770) 374-5305  
www.thedryeyedoctor.net

# OPHTHALMIC

## Product Guide

### AKR 750 AUTO KERATO-REFRACTOMETER

> Fast, accurate and fully automatic : an ideal solution for delegating patient measurement

- One-touch button measuring process for both eyes
- Ultra-precise measurement for even small diameter pupils
- Auto and manual measurement modes available
- Wide range of measures including peripheral keratometry with eccentricity
- Large 7.5" tilting screen for easy operation
- Automatic data transfer to APH 550



■ Unique "scanning window" with smooth and silent movement to create comfortable and stress-free exam atmosphere



phone: 855.393.4647  
email: info@essilorinstrumentsusa.com  
www.essilorinstrumentsUSA.com

Circle No. 35



### VISION-R 800™ REFRACTION SYSTEM

> Give your patients the best of their vision

- Patented optical module allowing for instant focus and exact refraction
- Refraction performed with the "Smart Tests" unique algorithms to optimize the exam
- Comfortable experience for the patient due to smooth, continuous power changes
- Results presented in simulated real-life conditions to enhance patient confidence



CONSOLE



CHART SCREEN: CS POLA 600



phone: 855.393.4647  
email: info@essilorinstrumentsusa.com  
www.essilorinstrumentsUSA.com

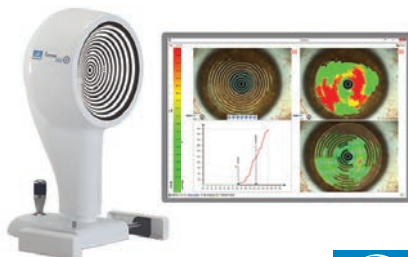
Circle No. 36



### CORNEA 550 CORNEAL TOPOGRAPHER

> Specially designed for contact lens fitting and dry eye analysis

- High-resolution color camera
- Wide array of graphic representations
- Advanced qualitative and quantitative tear film assessment
- Dynamic and static capture pupillometry
- Independent screen to facilitate the sharing of results
- Newly-enhanced AnaEyes software to provide one graphical summary report



phone: 855.393.4647  
email: info@essilorinstrumentsusa.com  
www.essilorinstrumentsUSA.com

Circle No. 37



### RETINA 400 FUNDUS CAMERA

> Simple and flexible solution for high-definition retinal imagery

- Non-mydratric retinal camera
- High-resolution sensor and wide field of vision
- Intuitive software including automated operations
- Independent screen to facilitate the sharing of results
- Flexible and adaptable to different practice configurations



phone: 855.393.4647  
email: info@essilorinstrumentsusa.com  
www.essilorinstrumentsUSA.com

Circle No. 38



### WAM 700+ WAVEFRONT ABERROMETER

> Fully-automatic for complete anterior chamber analysis and visual need assessment

- Fast, effective, and space-saving
- 7 detailed tests in 90 seconds; both eyes
- Key measurements: Wavefront aberrations, pachymetry, NCT, topography, ARK and more
- Simple to navigate with large touch screen



phone: 855.393.4647  
email: info@essilorinstrumentsusa.com  
www.essilorinstrumentsUSA.com

Circle No.39



### SL 500L / SL 550L DIGITAL SLIT LAMP

> Professional solution for complete eye examination

- High-quality optics and cutting-edge LED illumination
- 5 magnification levels
- Wide range of filters : cobalt blue, green, red, neutral density
- Integrated yellow filter and background illumination
- HD Digital camera DS 550 (optional)

Range of filters



Magnifications



SL 500L / SL 550L



phone: 855.393.4647  
email: info@essilorinstrumentsusa.com  
www.essilorinstrumentsUSA.com

Circle No.40



# OPHTHALMIC

## Product Guide

### HIGH-DEFINITION PORTABLE B-SCAN

#### B-Scan Plus®:

- Superior 0.015mm image resolution with distortion-free zoom up to 2x
- 12 useful measuring calipers as well as fully adjustable gain-control before, during, or after a scan
- Adjustable video loops and easy data transfers including EMR, DICOM<sup>SM</sup>, and .PDF reporting

Circle No. 41



**Keeler**

Contact us for pricing & more information  
800.523.5620 // 610.353.4350 // KEELERUSA.COM

A Halma company

### EASY-TO-USE PLATFORM

— 4SIGHT® —

- Combines A-Scan®, UBM®, B-Scan®, and Pachymeter® into one platform
- Easy data transfer between modalities, including DICOM<sup>SM</sup>, for higher patient throughput
- Unsurpassed accuracy and image quality

Circle No. 42



**Keeler**

Contact us for pricing & more information  
800.523.5620 // 610.353.4350 // KEELERUSA.COM

A Halma company

### THE BEST OF BOTH WORLDS

#### AccuPen®:

Circle No. 43

- Portable handheld tonometer
- Micro strain gauge provides precise IOP measurements with minimal calibration needed

#### PachPen®:

- Portable handheld pachymeter
- 65 MHz sampling rate ensures precise measurements
- Digital signal analysis eliminates the need for calibration and only measures when properly aligned

**Keeler**

Contact us for pricing & more information  
800.523.5620 // 610.353.4350 // KEELERUSA.COM

A Halma company

### EFFICIENCY IS KEY

— A-SCAN PLUS CONNECT® —

Circle No. 44

- Automatic EMR exports with DICOM<sup>SM</sup> – Decreases examination time and increases patient throughput
- Icon-based software with easy-to-use interface
- Wide variety of IOL and post-refractive formulas
- Unrivaled customer support



**Keeler**

Contact us for pricing & more information  
800.523.5620 // 610.353.4350 // KEELERUSA.COM

A Halma company

Circle No. 45



### Free air with the TonoCare

No pins or disposables = no ongoing costs.

**Keeler**

Contact us for pricing & more information  
800.523.5620 // 610.353.4350 // KEELERUSA.COM

A Halma company

### THE STANDARD IN CRYO SURGERY

— KEELER CRYOMATIC MKII —

- Cryosmart technology – self-adjusts the optimal operating parameters for any given probe
- Choose from disposable probes or a series of reusable probes
- Ease of use – fast-freeze and defrost
- No manual adjustments, easy setup

Circle No. 46



**Keeler**

Contact us for pricing & more information  
800.523.5620 // 610.353.4350 // KEELERUSA.COM

A Halma company



# OPHTHALMIC

## Product Guide

### DIGITAL SLIT LAMPS

— IN ANY STYLE —

#### Circle No. 47

- Keeler Optics
- Choose from a variety of Keeler Certified add-ons
- 3 step drum (10x, 16x, 25x)
- 5 step drum (6x, 10x, 16x, 25x, 40x)
- Your choice of image capturing software



**Keeler**

Contact us for pricing & more information  
800.523.5620 // 610.353.4350 // KEELERUSA.COM

A Halma company

### MARKET LEADING INDIRECTS



- Interchangeable LED or xenon illumination
- Lightweight Slimline lithium polymer battery
- Wide range of filters & apertures
- Exclusive to Vantage Plus:
  - Intelligent Optics
  - HiMag™ lens: additional 1.6x magnification allows for superb stereoscopic images

#### Circle No. 48

**Keeler**

Contact us for pricing & more information  
800.523.5620 // 610.353.4350 // KEELERUSA.COM

A Halma company

### KSL-H SLIT LAMP



KSL-H

#### Circle No. 49

- Keeler Optics
- Choose from analog, digital ready, or digital
- 3 step drum (10x, 16x, 25x)
- 5 step drum (6x, 10x, 16x, 25x, 40x)
- Keeler Certified 3<sup>rd</sup> party accessories available for digital slit lamps

**Keeler**

Contact us for pricing & more information  
800.523.5620 // 610.353.4350 // KEELERUSA.COM

A Halma company

### PORTABLE SLIT LAMPS

#### PSL Classic (left):

- Keeler Optics
- 10x // 16x magnification
- Docking station and direct inline charging

#### PSL One (right):

- Keeler Optics
- 10x magnification
- Direct inline charging

#### Circle No. 50



**Keeler**

Contact us for pricing & more information  
800.523.5620 // 610.353.4350 // KEELERUSA.COM

A Halma company

### KSL-Z SLIT LAMP



KSL-Z

#### Circle No. 51

- Keeler Optics
- Choose from analog, digital ready, or digital
- 3 step drum (10x, 16x, 25x)
- 5 step drum (6x, 10x, 16x, 25x, 40x)
- Keeler Certified 3<sup>rd</sup> party accessories available for digital slit lamps

**Keeler**

Contact us for pricing & more information  
800.523.5620 // 610.353.4350 // KEELERUSA.COM

A Halma company

### LESS IS MORE

— PULSAIR DESKTOP —

#### Pulsair Desktop Tonometer:

- Accurate and easy to use
- Smallest footprint
- Economically priced

#### Circle No. 52



**Keeler**

Contact us for pricing & more information  
800.523.5620 // 610.353.4350 // KEELERUSA.COM

A Halma company

# OPHTHALMIC

## Product Guide

### CENTERVUE - EIDON TRUE COLOR WIDE FIELD IMAGING

The EIDON is a confocal scanning ophthalmoscope providing true-color images of the retina. Automation provides unsurpassed image quality independent of the operator's skill level. The EIDON images from 60° to 120° [90°-200° Center of the Eye] through cataracts and undilated pupils. Three models providing Color/FAF/FA.



**eidon**  
True Color Confocal Scanner

Circle No. 53

To Learn More:  
infous@CenterVue.com

CenterVue ▲ (888) 521 3575  
www.CenterVue.com



### QuickSee™ Binocular Wavefront Autorefractor

Circle No. 54

- Fast:** Measurements in 10 seconds
- Accurate:** Within 0.5D for spherical equivalent refraction in >85% of subjects
- Hand-held:** Lightweight device goes anywhere
- Simple:** Easy to learn, easy to use, patient-friendly

Learn more at [plenoptika.com](http://plenoptika.com)

### BRUDER HYGIENIC EYELID SOLUTION™

Use with **Bruder Moist Heat Eye Compresses** as part of an overall ocular wellness program.

#### Prescription Strength Without A Prescription

Supports rapid and effective relief from Dry Eye, Blepharitis, Styes, and Red, Itchy Eyelids

- 100% Pure Hypochlorous Acid Solution (0.02%)
- Available in 30mL and 60mL



Circle No. 55

To order, sign in to [order.bruder.com](http://order.bruder.com).  
888-827-8337 | [www.bruder.com](http://www.bruder.com)

**Bruder**®

### THE ONLY EYE COMPRESS CLINICALLY PROVEN TO EXTEND COMFORTABLE WEARING TIME OF CONTACT LENSES



**eyeleve™**  
by **Bruder**®

CONTACT LENS COMPRESS Circle No. 56

Sold in Convenient 10 piece Dispenser or 20/Case  
Learn more at [www.eyeleve.com](http://www.eyeleve.com) or call 888-827-8337.

### THE POWER OF THE PULSE - ADVANCED DOCTOR TREATMENT FOR ANTERIOR BLEPHARITIS\*

From one of the inventors of the First Doctor's Treatment for Blepharitis - the AB Max™ provides the same forward and reverse functionality as other devices, PLUS, a Patented PULSE mode specifically engineered to remove even the most tenacious scurf and debris, while gently massaging the anterior eyelid margins for better patient outcomes!



\*Anterior blepharitis means blepharitis on the outer eyelid margin, including the eyelashes.

Circle No. 57

Myco Industries ▲ (800) 721-8006  
www.ab-max.com

### PROVEN FORMULAS FOR PRACTICE SUCCESS

As the #1 doctor-recommended brand and the #1 choice of professional athletes, EyePromise provides expertise in eye health and nutrition science. In delivering unmatched products and services, we offer an extensive line of ocular nutraceuticals that can benefit 6 in 10 patients. Supported by clinical trials and an unconditional, 60-day, money-back guarantee, EyePromise supports both patient and practice success.



Circle No. 58

EyePromise ▲ (866) 683-8796  
www.eyepromise.com

# OPHTHALMIC

## Product Guide

### IBEX WIRELESS INDIRECT

Break through the limitations of wired examinations.

Smart engineering, stunning tissue clarity and dual-lithium rechargeable batteries enable you to stay unplugged all day, every day -- even for weeks without charging!

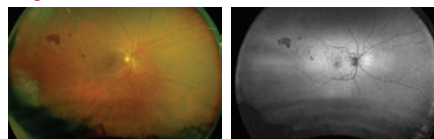


Circle No. 59

Only \$1,895 [www.ibexeye.com](http://www.ibexeye.com)

A Trevi Technology 614-754-7175

### Optos is Ultra-widefield Retinal Imaging



optomap® color

optomap® af

200° 3-in-1 optomap color and autofluorescence images.

- Uncover critical information
- Help prevent vision loss
- Increase practice flow



Find out what optomap ultra-widefield retinal imaging can do for your practice.

What you can do in less than ½ second? [BDS@optos.com](mailto:BDS@optos.com) – 800-854-3039

Circle No. 60



### JOIN LEADING EYE CARE PROFESSIONALS TO OPTIMIZE VISION AND REDUCE RISK OF MACULAR DISEASE

MacuHealth's Advanced Formulation is the MOST RESEARCHED FORMULATION IN THE WORLD

- Increase all three serum carotenoids
- Enrich macular pigment density and volume across the spatial profile
- Significantly improves contrast sensitivity at 6 cpd
  - o In healthy patients
  - o Cataract patients
  - o Patients with macular disease
- Veiling luminance and Glare reduction
- Faster photo stress recovery
- Improved dark adaptation
- Faster critical flicker fusion – ability to see higher frequency flicker
- Better coincidence anticipation – for better hand-eye coordination and faster decision making

Circle No. 61

Use evidence-based science to improve patient outcomes



Macuhealth LP  
866-704-0845  
[www.macuhealth.com](http://www.macuhealth.com)

### ICARE IC100 TONOMETER – FOR PROFESSIONALS

The Icare® ic100 is a hand-held tonometer using rebound technology to measure IOP. The device is suitable for every patient as it does not require anesthetic, calibration or possibility of corneal disruption. Features new to the ic100 aid all operators with quick, proper alignment resulting in consistent and objective measurements.

Circle No. 62



To learn more, call 888.422.7313  
email [info@icare-usa.com](mailto:info@icare-usa.com) or visit [www.icare-usa.com](http://www.icare-usa.com).

### COMPUTERIZED READING ACUITY TEST – A KEY QUALITY OF LIFE FUNCTIONAL MEASURE

Whether you are assessing a patient's response to a refractive technology or a disease therapy, reading speed and reading acuity can provide valuable information about the quality of their vision. Remember! Reading acuity and Visual Acuity can be very different.

- Easy, economical and fast testing
- Ability to present sentences as small as 20/16 at 40cm
- Multiple languages
- Adjustable contrast and luminance
- 3 distance algorithms – near (40cm), computer (66cm) and intermediate (80cm)
- Randomized sentences to prevent familiarization



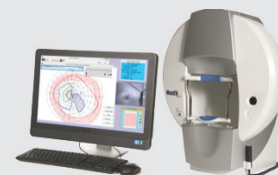
Circle No. 63

SRD Vision ▲ (347)-321-8518  
[www.srdvision.com](http://www.srdvision.com)

### NO OTHER GOLDMANN PERIMETRY LIKE THIS! THE WORLD'S MOST ADVANCED PERIMETER

The MonCvONE CR full-field perimeter from Metrovision (Lille, France) offers more functional capability than any other perimeter. In addition to traditional perimeter features, it offers:

- Widest field in the industry
- Static & kinetic perimetry
- Manual Goldmann perimetry
- Blue/yellow
- Attraction perimetry for infants
- Video imaging
- Photopic, scotopic & mesopic background
- Dark adaptometry
- Pupillometry
- Two-year warranty



Circle No. 64

SRD Vision ▲ (347)-321-8518  
[www.srdvision.com](http://www.srdvision.com)

# OPHTHALMIC

## Product Guide

### i.TERMINAL® 2 & i.TERMINAL® MOBILE BY ZEISS

i.Terminal 2 enables a premium patient experience.

- 60% faster than using manual measuring procedures
- 84% more accurate than a manual process.



Mobile centration is the modern way to capture your patient's individual fitting parameters.

- Can be used with any type of frame including large-sized sunglasses and sports frames
- Can integrate with EMR systems



Circle No. 65

Carl Zeiss Vision Inc. ▲ 1-800-358-8258  
www.zeiss.com/equipment

### i.PROFILERplus® BY ZEISS

Ocular wavefront aberrometer, corneal topographer, autorefractor, and keratometer – all in one compact instrument.

- Includes i.Scription® by ZEISS software – Rx technology with ZEISS customized lenses
- Fully automated
- Binocular measurement in less than one minute
- Ocular wavefront measurement up to 7<sup>th</sup> order Zernike aberration
- Integration EMR and ZEISS Digital Refraction Systems
- Optional ATLAS® Review Software for advanced corneal topography



Circle No. 66

Carl Zeiss Vision Inc. ▲ 1-800-358-8258  
www.zeiss.com/equipment

### VISULENS® 550 FROM ZEISS

The ZEISS VISULENS 550 provides reliable lens measurement for profound lens consultation and a high-level of patient care.

- Hartmann-Shack wavefront measurement sensor
- UV module with spectrometer range 370 to 480 nm in steps of 3 nm
- Display of measurement lists and patient worklists
- Network connectivity via LAN with web service, web server, shared folder, remote network configuration



Circle No. 67

Carl Zeiss Vision Inc. ▲ 1-800-358-8258  
www.zeiss.com/equipment

### VISUREF® 100 FROM ZEISS

VISUREF 100 – a straightforward, easy-to-use Autorefractor / Keratometer provides accurate and reliable data for your daily practice routines.

- Motorized chin rest
- Auto-trigger function and integrated thermal printer
- Integration with EMR and ZEISS Digital Refraction Systems
- Fogging to reduce the effects of accommodation
- Refraction measurements of patients with implanted IOLs



Circle No. 68

Carl Zeiss Vision Inc. ▲ 1-800-358-8258  
www.zeiss.com/equipment

### VISUSCOUT® 100 FROM ZEISS

With lightweight and compact design, the ZEISS VISUSCOUT 100 allows simple retinal imaging and great flexibility when and wherever the need arises.

- 40° FoV color and red-free images, autofocus
- 9x internal fixation targets
- Battery-powered
- Wi-Fi and USB connectivity, optional DICOM
- Highly portable, lightweight device



Circle No. 69

Carl Zeiss Vision Inc. ▲ 1-800-358-8258  
www.zeiss.com/equipment

### VISUPLAN® 500 FROM ZEISS

VISUPLAN 500 makes this IOP examination very easy precise.

- Air-puff principle
- Fully automated with touch screen operation
- Easy to use and delegate to practice staff
- Fast measurement for easy and early identification of high-risk IOP patients even during pretest exams
- No need for anesthetics or fluorescein
- Integration with EMR



Circle No. 70

Carl Zeiss Vision Inc. ▲ 1-800-358-8258  
www.zeiss.com/equipment

# OPHTHALMIC Product Guide

## ZEISS DIGITAL REFRACTION SYSTEM



ZEISS Digital Refraction System provides easy subjective refraction acuity chart and digital phoropter.

- Browser and iPad controlled
- Vision chart available in two versions, can be used as stand-alone
- Flexible, modular and expandable system
- Efficient with preconfigured, customizable workflow
- Connectivity to ZEISS VISUREF 100, ZEISS VISULENS 500 and i.Profiler<sup>plus</sup>
- Clearly structured interface for EMRs
- Freestyle mode for expert users
- Full 21

Circle No. 71



Carl Zeiss Vision Inc. ▲ 1-800-358-8258  
www.zeiss.com/equipment

## SLIT LAMP IMAGING MODULE BY ZEISS

**SL 115 Classic** - ideal for all routine examinations and contact lens fitting.

**SL 120** - a powerful all-rounder offering precise, efficient support for a wide range of applications.

**SL 220** - superb optical and mechanical qualities with the popular tower concept.

**SL Cam 5.0 Imaging Module** - a compact, fully integrated camera for still and video capture with the SL imaging software.



Circle No. 72



Carl Zeiss Vision Inc. ▲ 1-800-358-8258  
www.zeiss.com/equipment

## YOU HAVE TRIED THE REST, NOW TRY THE BEST

We have 2 dry Eye Compresses to choose from, the Premium (very best on the market) and Basic Dry Eye Compress, same quality for less.

### Eye Doctor Plus Moist Heat Mask:

Now our moist heat compresses are made with antimicrobial material!

1. The shape of the mask is designed to fit any size face comfortably.
2. This is the only moist heat mask that can be heating in the microwave and oven
3. 20 to 30 seconds on "high" in the microwave gives off 10 to 12 minutes of soothing moist heat.
4. Has a removable cover for easy washing & drying, can be used within 2 hours.



Circle No. 73

The Dry Eye Doctor, Inc. ▲ (770) 374-5305  
www.thedryeyedoctor.net

## HYCLEAR

HyClear (balanced analytic hypochlorous acid) .01% is a next-generation hypochlorous acid formulation indicated for daily eyelid health management. HyClear combines the benefits of pure hypochlorous acid in a more stable formulation that provides up to 18 months of shelf life. HyClear is gentle enough to use every day and a great addition to any eye health management regimen.



Circle No. 74

Contamac ▲ (833) 266-8262  
gethyclear.com

## The New PACHMATE 2



## The New PACHETTE 4



Globally Recognized as the Leading Handheld & Portable, Desktop Pachymeters

Now Featuring Automatic Report Generation Using Wireless Bluetooth® Technology

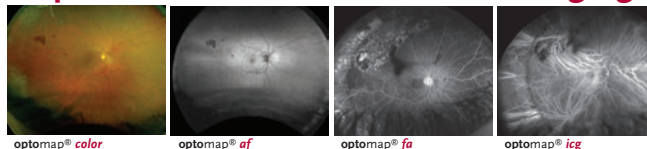
- Proven Accuracy & Reproducibility
- Customizable Settings
- Rapid Bilateral Measurements
- Durable Portability
- User Friendly

Circle No. 75

**DGH** TECHNOLOGY, INC.  
THE ULTRASOUND SPECIALIST

(800)722-3883  
www.dghtechnology.com  
110 Summit Dr., Suite B, Exton, PA 19341

## Optos is Ultra-widefield Retinal Imaging



200° 3-in-1 **optomap color**, autofluorescence, fluorescein angiography and indocyanine green image modalities. Capture, review and plan your treatment with *California*.

- Uncover critical information
- Help prevent vision loss
- Increase practice flow



What you can do in less than ½ second? [BDS@optos.com](mailto:BDS@optos.com) – 800-854-3039

Circle No. 76

**optos**  
Building The Retina Company  
optos.com

# OPHTHALMIC

## Product Guide

### BQ 900® LED Slit Lamp

Fully integrated imaging solution

Choose the BQ 900 LED for advanced microscopy. The BQ 900 is powered by a long-lasting LED diode that offers exceptional detail and depth of field. It is the ultimate slit lamp due to its flexible modular design. The IM 900 imaging module offers a fully integrated imaging solution with unique features and technology. Other optional accessories include Teaching Scope, Inclined Eyepieces, Yellow Filter, Stereo Variator, and Beam Splitter.



Circle No. 77



800.787.5426  
haag-streit-usa.com

### BI 900® LED Slit Lamp

Simplified operation meets high reliability.

Equipped with an improved version of the BM 900 microscope, an enhanced illumination system and traditional high-precision mechanics, the BI 900 is the ideal successor to the BM 900. The BI 900 slit lamp combines simplicity and reliability in a modern system which offers integrated digital imaging as an option.



Circle No. 78



800.787.5426  
haag-streit-usa.com

### Reliance FX-920®

The standard for chair design

The FX-920 sets the standard for design while retaining the core value of all Reliance products - rugged durability. All surfaces of the chair are designed to support a patient's entire weight. Ergonomic full power tilt is efficient for the practitioner and comfortable for the patient. A full complement of controls is available on both sides of the chair, while the detached dual footswitch adds flexibility.



Circle No. 79



800.735.0357  
reliance-medical.com

### LENSTAR® APS Optical Biometer

Advanced biometry— better outcomes

The LENSTAR LS 900 with Automated Positioning is all you need for faster, more efficient biometry. Its easy mechanical tracking minimizes user delay and error, delivering more reliable results and a more comfortable patient experience. The dual zone keratometry with 32 measurement points provide precise K values, essential for planning toric lens implantation. With its integrated Olsen and Barrett formulas, as well as exclusive availability of the Hill-RBF Method 2.0 for IOL calculation, the LENSTAR provides the user with the best possible IOL prediction.



Circle No. 80



800.787.5426  
haag-streit-usa.com

### Octopus 600®

Early diagnosis and standard white-on-white perimetry in one device

The Octopus 600, with EyeSuite Progression Platform, extends Haag-Streit's product range of visual field analyzers, combining the Pulsar method for early glaucoma detection and standard White/White perimetry for long term follow-up in one compact and stand-alone device. Unique fixation control for blinking, pupil position, darting and forehead contact, yields more reliable results, and with our Tendency Oriented Perimetry (TOP strategy), thresholds are performed in 2 ½ minutes.



Circle No. 81



800.787.5426  
haag-streit-usa.com

### Octopus 900®

Versatility PLUS connectivity!

The Octopus 900, with EyeSuite Progression Platform, is the most versatile perimeter available. The Octopus 900 features more options for reliable testing, including: static White/White, Blue/Yellow, Red/ White, Flicker, Low Vision and computer-assisted true Goldmann Kinetic, TOP Strategy for thresholds in 2-1/2 minutes and our unique fixation control. EyeSuite, the industry's most advanced software for progression analysis, includes the first perimetric analysis to combine structure and function with real-time interactive access to all perimetric data with easy networking and free viewing stations.



Circle No. 82



800.787.5426  
haag-streit-usa.com

# OPHTHALMIC

## Product Guide

### LACRIVERA'S VERA180™ - OFFERS TEMPORARY OCCLUSION LASTING APPROXIMATELY 6 MONTHS!

Vera180™ synthetic absorbable lacrimal plugs provide extended temporary occlusion lasting approximately 6 months. The Vera180 plugs are made of poly-p-dioxanone (PDO) and are available in sizes of 0.2mm, 0.3mm, 0.4mm and 0.5mm, packaged in single pair and ten pair boxes (20 plugs). Lacriversa continues to offer a comprehensive line of dry eye products.



Circle No. 83

Lacriversa ▲ (855) 857-0518  
www.Lacriversa.com

Circle No. 84

### EYE REFRACT™ Comprehensive Refraction System



SCAN ME FOR MORE INFO!

Maximize your patient consult time and free yourself to focus on critical tasks by eliminating the 2-step refraction process.



- Consistent and accurate automated refraction, regardless of operator
- Embedded algorithms guide subjective refinement
- Accurate prescription in less than 4 minutes
- Patented dual Shack-Hartmann wavefront aberrometers

Luneau Technology  
USA briot WECO VISI<>NIX

800-729-1959  
www.luneautechusa.com

### HELP YOUR DRY EYE PATIENTS FIND RELIEF FAST

Call **833-246-4393** to sell REFRESH®

A service for your practice that brings added convenience to your patients.

**Refresh Direct**  
a division of ALLERGAN | DIRECT

[refreshbrand.com/doc](http://refreshbrand.com/doc)



Circle No. 85

© 2018 Allergan. All rights reserved. All trademarks are the property of their respective owners. REF112579 01/18

Circle No. 86

### VX 40 Fully Automatic Wavefront Lens Analyzer

This wavefront lens analyzer gives you detailed progressive lens analysis and comparison via easy one-click operation. Precise to .01 diopter, the VX40 is the perfect instrument for accurate measurements and patient education.



SCAN ME FOR MORE INFO!

- Powermap® Wavefront Technology Sensor
- Automatic Lens Type Detection
- Progressive, SV, and Free-form Lens Analysis
- EMR and 3rd Party Device Integration



Luneau Technology  
USA briot WECO VISI<>NIX

800-729-1959  
www.luneautechusa.com

### NEUROLENS®

eyeBrain Medical, Inc. is the innovator behind neurolenses®, the first prescription lenses that add a contoured prism to bring the eyes into alignment. Contoured prism has been shown in studies, to relieve the headaches, neck/shoulder pain and eyestrain that many people experience when using digital devices, reading or doing detail work. Patient satisfaction surveys show 93 percent of patients respond positively to their neurolenses. eyeBrain Medical is headquartered in Orange County, CA.



**neurolens®**  
Relief is in Sight

Circle No. 87

Neurolenses ▲ 949-339-5157  
www.neurolenses.com

Circle No. 88

### VX 130 Wavefront Anterior Segment Analysis

The VX 130 Corneal Segment Analyzer allows you to add a significant amount of eye health data to your pre-screening ARK regimen, without slowing down your patient flow.



SCAN ME FOR MORE INFO!

- Glaucoma detection / IOP
- Cataract / Toric IOL
- Refractive surgery
- Cornea / Keratoconus




Luneau Technology  
USA briot WECO VISI<>NIX

800-729-1959  
www.luneautechusa.com

# OPHTHALMIC

## Product Guide

DEXYCU is available to order.



**DEXYCU**  
(dexamethasone intraocular suspension) 9%

NDC Code: 71879-001-01  
Unique Permanent J-Code: J1095<sup>1</sup>

**For more information visit DEXYCU.com**

**Circle No. 89**

Reference: 1. U.S. Centers for Medicare & Medicaid Services. HCPCS Quarterly Update: New Coding Action Published November 8, 2018 Effective 1-1-19. Available at: <https://www.cms.gov/Medicare/Coding/HCPCSReleaseCodeSets/HCPCS-Quarterly-Update.html>. Accessed November 9, 2018.

**EYEPOINT** PHARMACEUTICALS | 1-833-EYEPOINT | **DEXYCU.com**

US-DEX-1900100 05/2019

**VITASIGHT™**  
Better Nutrition to Support Healthy Vision

**COMBATS DRY EYE SYMPTOMS AND PROMOTES HEALTHY TEARS**



**O3+Maqui™**  
Omega-3 with Maqui Berry

**MaquiBright®**  
Clinical trials show maqui berry increases tear production and improves dry eye symptoms.

**Omega-3 Fatty Acids**  
O3+Maqui contains 2745mg of highly refined, re-esterified omega-3 fish oil.

**Circle No. 91**

LEARN MORE AT **O3Maqui.com**

**FOCUS Laboratories**  
(866)762-6006 – FocusLaboratories.com  
Trademarks: O3+Maqui™ (Focus Laboratories, Inc.)  
Copyright © 2019 FOCUS Laboratories, Inc. All Rights Reserved.


FLM315 0619-01

<sup>1</sup> This statement has not been evaluated by the Food and Drug Administration. This product is not intended to diagnose, treat, cure or prevent any disease.

**INFLAMMADRY**

**QUIDEL** InflammADry

InflammADry is the first rapid, in-office CLIA-waived test that detects elevated levels of MMP-9, an inflammatory marker that is consistently elevated in tears of patients with dry eye disease. InflammADry is easily performed in 4 simple steps, minimally invasive, requires no special equipment, and accurately identifies patients with dry eye allowing for optimal treatment methods.




**Circle No. 93**

Quidel ■ (800) 874-1517  
[quidel.com](http://quidel.com)

**ICARE HOME TONOMETER – FOR PATIENTS**

The **icare® HOME** provides a new way to obtain IOP measurements outside the doctor's office. IOP fluctuates throughout the day and this 24-hour tonometer allows patients to take their own measurements at any time. This added information gives doctors a better understanding of the patient's IOP and can be advantageous for disease management.



**icare HOME**

To learn more, call 888.422.7313  
email [info@icare-usa.com](mailto:info@icare-usa.com) or visit [www.icare-usa.com](http://www.icare-usa.com).

**Circle No. 90**

**OCUSOFT® LID SCRUB® ALLERGY EYELID CLEANSER**

OCuSOFT® Lid Scrub® Allergy Eyelid Cleanser for allergy conditions in convenient pre-moistened pads. Seasonal allergies can cause red, itchy, inflamed eyes and eyelids. Allergy eye drops act to relieve eye symptoms but do nothing to calm the irritated eyelids which are directly related. Removing allergens from the eyelids can provide added relief and reduce the risk of transfer into the tear film. This product also removes oil, debris, pollen and other contaminants from the eyelids while utilizing Green Tea Extract, Tea Tree Oil and PSG-2™ (Phytosphingosine) to effectively reduce redness, inflammation and itching of allergy eyelids.




**OCuSOFT™**

**Circle No. 92**

OCuSOFT, Inc. ▲ (800) 233-5469  
[www.ocusoft.com](http://www.ocusoft.com)

**Detect and monitor AMD with AdaptDx® testing.**

- When night vision problems begin
- Three years before drusen are visible
- With 90% accuracy
- Reimbursable using CPT code 92284



**Circle No. 94**

[maculogix.com](http://maculogix.com) | +1 717.914.4067

**maculogix**  
The AMD expert