

# OPHTHALMIC Product Guide

Special Advertising Section



## Dear Doctor,

Review of Optometry is pleased to offer you this preview of many exciting new products now available in the ophthalmic marketplace. Here, you'll learn about innovative new medications, diagnostic instruments, corrective lens options, in-office laboratory equipment and many other products. There are two ways to obtain more information on a particular product:

1. Go to [www.reviewofoptometry.com](http://www.reviewofoptometry.com), click Supplements, Product Guide digital edition, and then follow the prompts.
2. Circle the corresponding number on the enclosed reader service card for each product of interest. Fill in your name and address, and return the postage-paid card to us. Educational materials will be sent directly to you by the individual companies.  
Thank you for your interest and support!

**Circle No. 1**

**MGD?  
MEET MEGA-3**

Sell **MEGA-3** and more from REFRESH® in your office.  
Call **833-246-4393**



**Refresh Direct**  
a division of ALLERGAN | DIRECT  
[refreshbrand.com/doc](http://refreshbrand.com/doc)

© 2018 Allergan. All rights reserved. All trademarks are the property of their respective owners. REF107962\_v2 01/18

**AOS Anterior Software**

- Easy-to-use automated grading system.
- Analyzes bulbar redness, ocular surface, corneal staining, and lid roughness.
- Compatible with Windows 7+.
- Works with any digital anterior lamp, smart-phone adaptor, and digital camera adaptor.



**Keeler** **Circle No. 2** 800-523-5620 • 610-353-4350  
Buy Online! • [keelerusa.com](http://keelerusa.com)


**Circle No. 3**

**Blephadex**  
Science Based Lid Care

**Tea Tree Oil:**  
• Anti-bacterial, anti-microbial, anti-fungal

**Coconut Oil:**  
• Anti-inflammatory, anti-bacterial, anti-microbial, anti-fungal

**Blephadex™** uses a preservative-free, all-natural patented formula of tea tree oil and coconut oil specifically designed for Blepharitis, MGD, Demodex and Dry Eye without any harmful chemicals or burning sensation. You're complete in office and at home treatment.



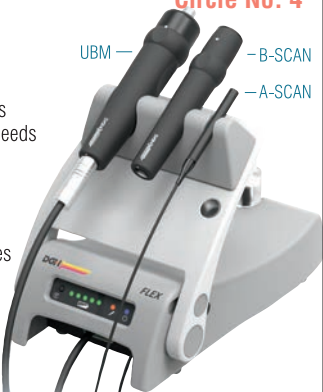
**LUNOVUS**  
WHERE LIFE IMPROVES

[WWW.CLEANHEALTHYLIDS.COM](http://WWW.CLEANHEALTHYLIDS.COM) 1-800-980-6551 100% SATISFACTION GUARANTEE

**Circle No. 4**

**The New Scanmate Flex**  
A-Scan / B-Scan / UBM

- Ophthalmic ultrasound platform that is configurable to all your examination needs
- Improved B-scan probe design for better reliability
- Utilizes AC or internal rechargeable battery power for portability
- Contact and Immersion A-Scan modes
- UBM capabilities with ClearScan®
- Area, angle and length measurement and annotation tools
- Easy export video, image and PDF files for EMR/EHR use



Serving Eye Care Professionals Since 1982

**DGH** TECHNOLOGY, INC.  
THE ULTRASOUND SPECIALIST

(800) 722-3883  
[www.dghtechnology.com](http://www.dghtechnology.com)

Requesting product information is now fast and easy! Go to [www.reviewofoptometry.com](http://www.reviewofoptometry.com), click Supplements, Product Guide digital edition and follow the prompts to request product information.

# OPHTHALMIC

## Product Guide

### TOPCON ALADDIN BIOMETER / TOPOGRAPHER

The 9-in-1 Aladdin is a multi-functional instrument that combines a series of measurements to assist eye surgeons in the accurate calculation of IOL power. The built-in full Placido topography system offers all the additional diagnostic capabilities of any stand-alone topographer. New features of the Aladdin HW3.0 include Crystalline Lens Thickness, Central Corneal Thickness, ACD measured by Interferometry, Onboard Barrett and Olsen IOL Calculation Suites, and Abulafia-Koch Regression Formula for Toric IOL.

Circle No. 5



Topcon Medical Systems ▲ (800) 223-1130  
[newsgram.topconmedical.com/aladdintl](http://newsgram.topconmedical.com/aladdintl)

### TOPCON CA800 CORNEAL ANALYZER

The CA800 Corneal Analyzer from Topcon gives you all the tools you need to accurately evaluate the anterior corneal surface. It features a Placido based corneal topographer that analyzes over 100,000 data points as well as meibomian gland imaging, dynamic pupillometry, tear film breakup, contact lens fitting and fluorescein video imaging. And, all this in an easy-to-use platform with an innovative 10.1" touch screen display.

Circle No. 6



Topcon Medical Systems ▲ (800) 223-1130  
[newsgram.topconmedical.com/ca800](http://newsgram.topconmedical.com/ca800)

### TOPCON SLD701 SLIT LAMP

The new SLD701 Slit Lamp from Topcon features a bright and homogenous LED illumination source for enhanced observation of the eye structures. With its optional DC-4 Digital Photo Attachment, the SLD701 can obtain clear and sharp still images of the eye as well as vivid color videos with remarkable resolution and detail. Basic EZ Capture software is provided with the DC-4 attachment. To further enhance the imaging results, the SLD701 also features an optional BG-5 LED Background Illuminator that provides homogeneous adjustable illumination to the photographed areas of the anterior segment of the eye and allows for Meibomian gland observation and documentation.

Circle No. 7



Topcon Medical Systems ▲ (800) 223-1130  
[newsgram.topconmedical.com/sld701](http://newsgram.topconmedical.com/sld701)

### TOPCON CV5000S VISION TESTER

The CV-5000S Automated Vision Tester sets new quality standards. The fast lens rotation provides comfort for both user and patient while the compact and contemporary design enhances the doctor's professional image. The CV5000S provides a complete 21-point refraction and features the KB50S One Dial Controller with a 10.4" color touch-screen display. Complete connectivity allows data to be sent automatically to every CV system throughout the office and populated automatically into the EMR, making paperless refraction a reality.

Circle No. 8

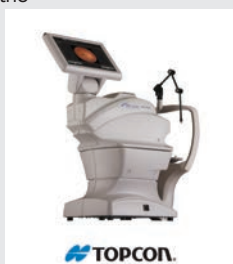


Topcon Medical Systems ▲ (800) 223-1130  
[www.topconmedical.com/products/cv5000s.htm](http://www.topconmedical.com/products/cv5000s.htm)

### TOPCON TRCNW400 NON-MYDRIATIC RETINAL CAMERA

The Topcon TRCNW400 is a fully automated, easy-to-use, non-mydriatic retinal camera that is designed to obtain high-resolution color images of the retina and the anterior segment of the human eye. It is equipped with automatic focusing and capture and a fully automated mechanism that moves the optical head from one eye to the other without operator intervention. The TRCNW400 features a large 10" color touch screen and 9 internal fixation targets for wide-angle compositions of the retina. The TRCNW400 can be used as a stand-alone unit or in conjunction with a remote server or EMR system. It is DICOM compliant and also available with the optional Topcon IMAGEnet digital imaging software.

Circle No. 9



Topcon Medical Systems ▲ (800) 223-1130  
[newsgram.topconmedical.com/trcnw400](http://newsgram.topconmedical.com/trcnw400)

### TOPCON KR1W WAVEFRONT ANALYZER

The 5-in-1 KR1W Wavefront Analyzer from Topcon combines wavefront aberration, corneal topography, auto-refraction, keratometry, and pupillometry all in one unit! The system is extremely easy to operate, featuring auto alignment and measurement, a large color touch screen, and invisible light measurement for added patient comfort. The onboard evaluation software with multiple map displays provides valuable pre- and post-op data for cataract and refractive procedures. The system is fully networkable in various configurations.

Circle No. 10



Topcon Medical Systems ▲ (800) 223-1130  
[www.topconmedical.com/products/kr1w.htm](http://www.topconmedical.com/products/kr1w.htm)

# OPHTHALMIC

## Product Guide



### LASER Treatment Lenses

Volk's diverse laser lens portfolio features lenses for PRP, Focal/Grid Photocoagulation & ROP. Experience high resolution views out to the ora serrata with the HR Wide Field.

Use Volk's specialty laser lenses for Capsulotomy, Iridotomy, Laser Floater Removal & Suturelysis. Perform precise LFR with the Singh MidVitreous.



#### AVAILABLE FOR

- Indirect
- Direct
- Specialty Treatment

**Circle No. 11**



(800) 345-8655  
volk.com



### PORTABLE Ophthalmic Camera

From the exam room to nursing home calls, and everywhere in between, the Pictor Plus fundus camera moves with your practice & makes it possible to expand your services.

- Improves Patient Care
- Simple Integration
- Maximum Portability
- Pays for Itself

**Circle No. 12**



#### MODULES

- Retina
- Anterior Segment
- Fluorescein Angiography



(800) 345-8655  
volk.com



### READY TO USE Pre-Sterilized Lenses

Volk's single-use lenses are pre-sterilized and convenient for use in the exam lane or in the operating room. Our lenses offer Volk-quality optics, unmatched focusing capability, and minimal glare for retinal and anterior segment examinations, laser treatments & vitrectomy procedures.



#### AVAILABLE FOR

- Laser
- Gonio
- BIO
- Surgical Vitrectomy

**Circle No. 13**



(800) 345-8655  
volk.com



### THE BEST Surgical Visualization

Bring Volk Optics into the surgical suite. We offer a range of surgical lenses, along with the Merlin® surgical system, newly redesigned for precise alignment and a streamlined workflow. Experience our vitrectomy & MIGS suite of lenses for clear surgical visualization.



#### AVAILABLE FOR

- Contact
- Non-Contact
- Direct
- Indirect

**Circle No. 14**



(800) 345-8655  
volk.com

### TOPCON PASCAL® PATTERN SCANNING LASER SYSTEMS

The Topcon PASCAL® Pattern Scanning Laser Systems are renowned for their precision, ease of use and enhanced patient comfort. The PASCAL® method of photocoagulation allows physicians to control the precision, safety and efficiency of the laser procedure, while optimizing patient comfort and convenience. New offerings include the PASCAL Synthesis Series with Endpoint Management software and the PSLT module, available as an optional accessory on PASCAL Streamline lasers, for tissue sparing treatment of open angle glaucoma.

**Circle No. 15**



Topcon Medical Systems ▲ (800) 223-1130  
pascalvision.com/system

### TOPCON SYNERGY OPHTHALMIC DATA MANAGEMENT SYSTEM

Synergy provides eye care professionals the ability to easily collect, store, manage and access digital ophthalmic data created by the latest instruments, as well as legacy devices. The data may be accessed from anywhere, at any time, using secured internet connections, without the need for a VPN.

**Circle No. 16**



Topcon Medical Systems ▲ (800) 223-1130  
www.topconmedical.com/products/synergy.htm



# OPHTHALMIC

## Product Guide

Circle No. 17



## 6 VALUES IN 10 SECONDS

### AL-SCAN OPTICAL BIOMETER



K  
AL  
PS  
WTW  
CCT  
ACD

Learn More

Call: 1-800-223-9044  
usa.nidek.com



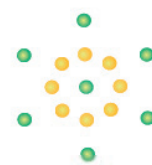
18-0004  
January 10, 2018

Circle No. 18



## EXPERIENCE PARACENTRAL MICROSCOPY

### CEM-530 SPECULAR MICROSCOPE



Learn More

Call: 1-800-223-9044  
usa.nidek.com



18-0001  
January 3, 2018

## Ocular Response Analyzer® G3

**Corneal Hysteresis: A more objective predictor of glaucoma progression.**

**Provide a more confident glaucoma risk assessment and a more personalized treatment approach.**

Ocular Response Analyzer® is the only device that measures Corneal Hysteresis, a superior predictor of glaucoma progression. Corneal Hysteresis has consistently shown to be predictive of, or strongly associated with, glaucoma progression, and more powerfully so, than key indicators such as IOP and CCT.

**CPT® Code 92145 for Corneal Hysteresis**

Made in the USA

Circle No. 19

CPT is a registered trademark of the American Medical Association



**Reichert®**  
TECHNOLOGIES

Advancing Eye Care. American Innovation.  
www.reichert.com • 888-849-8955

**AMETEK®**

## Tono-Pen® and Ocu-Film®

Trusted Handheld Tonometry

**Reichert® Tono-Pen® is the standard for handheld applanation tonometers, trusted by clinicians for over 30 years.**

The advanced Tono-Pen AVIA® tonometer requires no daily calibration and is always ready-to-use. The ergonomic design and dual-sided displays make it ideal for left or right handed use. Tono-Pen is less sensitive to corneal centration, ensuring fast and accurate IOP measurements with minimal training.

Protect your Tono-Pen and patients with genuine, FDA cleared Reichert® Ocu-Film® + Tip Covers.

Made in the USA

Circle No. 20



**Reichert®**  
TECHNOLOGIES

Advancing Eye Care. American Innovation.  
www.reichert.com • 888-849-8955

**AMETEK®**

## Reichert® 7CR and Reichert® 7

Non-contact Tonometers

**The most advanced and the easiest to use.**

In 1972, Reichert invented the non-contact tonometer (NCT), and after 45 years continues to offer the most accurate, trusted, and complete line of NCTs.

From the effortless one-button simplicity of Reichert® 7 to the clinically advanced Reichert® 7CR, which provides Corneal Compensated IOP (IOPcc), Reichert has a non-contact tonometer that suits your needs.

Made in the USA

Circle No. 21



**Reichert®**  
TECHNOLOGIES

Advancing Eye Care. American Innovation.  
www.reichert.com • 888-849-8955

**AMETEK®**

## iPac®

Handheld Pachymeter.

**Intuitive, inspired pachymetry.**

Reichert® iPac® is the most feature-rich handheld pachymeter available. It offers Bluetooth® wireless connectivity, one-button navigation, a rotating color LCD screen, and a rechargeable lithium-ion battery.

iPac is backed by an industry-leading three-year warranty.

Made in the USA

Circle No. 22



**Reichert®**  
TECHNOLOGIES

Advancing Eye Care. American Innovation.  
www.reichert.com • 888-849-8955

**AMETEK®**

# OPHTHALMIC

## Product Guide

### Phoroptor® VRx

#### Digital Refraction System

The most advanced Phoroptor® ever.  
Made in USA with only premium components.

Featuring the thinnest, most compact design, incredibly fast lens exchanges, motorized prisms, split cylinder lenses, and ultra-quiet operation, **Phoroptor® VRx** sets new standards in refraction. The ergonomic keypad features a multi-function control knob with unmatched feel and versatility, while the intuitive touch-screen interface has all the pre-programmed and programmable tests you'll need.

Phoroptor VRx boasts effortless integration with EMR systems, and unlike other digital refraction systems, is compatible with a comprehensive list of pre-test and acuity devices from both Reichert® and other leading manufacturers.

Made in the USA 🇺🇸

Circle No. 23



### ClearChart® 4

#### Digital Acuity Systems

Pixel-perfect and purpose-built.

The all-new family of ClearChart® Digital Acuity Systems are elegant, all-in-one, simple-to-use, and uniquely designed to meet all of your acuity testing needs with a wide selection of optotypes, and other special test charts.

The **ClearChart 4** Digital Acuity System, **ClearChart 4X** Enhanced Digital Acuity System, and **ClearChart 4P** Polarized Digital Acuity System all feature a new 24 inch, high resolution, LED backlit display that are lightweight, cool running and long-lasting. The intuitive user interface provides the best user experience of any digital acuity chart.

Made in the USA 🇺🇸

Circle No. 24



### LensChek™ Pro and LensChek™ Plus

#### Digital Lensometers

Circle No. 25

The elements of refraction. Combining technology, simplicity, and value.

The all-new **LensChek™ Pro** Digital Lensometer® with PD+UV and **LensChek™ Plus** Digital Lensometer® combine technology with simplicity at the core of your exam.

The new, compact, modern design and intuitive user interface offers the easiest lensmeter user experience available. For example, when the target is aligned with the correct optical center, readings can be automatically "locked-in" ensuring fast, repeatable, and reliable lens measurement. Both devices feature a brilliant 5.7 inch color LCD display.

LensChek Pro additionally features UV transmittance and PD measurement.



### OptoChek™ Plus

#### Auto Refractor + Keratometer

The elements of refraction. Combining technology, simplicity, and value.

The all-new **OptoChek™ Plus** Auto Refractor + Keratometer, combines technology with simplicity at the core of your exam. The compact, modern design, and intuitive user interface of the OptoChek Plus offers the easiest user experience available for measuring objective spherical and cylindrical refractive errors as well as keratometry.

An innovative reliability index gives you confidence in obtained readings. Scotopic Pupil Size and Photopic Pupil Size modes adjust illumination to accommodate different lighting conditions. OptoChek Plus features a brilliant 5.7 inch color, touch LCD display, data output options, and a measurement range of Sphere: -30 D to +22 D, Cylinder: 0 D to ±10 D, Axis: 0° to 180°.

Circle No. 26



### VisionChek™

#### Digital Exam Suite

The elements of refraction, featuring SightChek™ Digital Phoroptor®.

The all-new Reichert® **VisionChek™** Digital Exam Suite combines technology, simplicity, and value at the core of your exam, from the brand you've come to rely on most in refraction – Reichert! VisionChek includes all the options to get an entire digital exam lane up and running.

VisionChek Digital Exam Suite features:

**SightChek™** Digital Phoroptor®

**AcuityChek™** Digital Acuity Chart

**OptoChek™ Plus** Auto Refractor + Keratometer

**LensChek™ Plus** Digital Lensometer®

**LensChek™ Pro** Digital Lensometer® with PD + UV

Circle No. 27



### Ultramatic RX Master™

#### Phoroptor®

Since 1921, the unmistakable feel of quality.

The original and world's finest refracting instrument. Phoroptor continues to be the industry standard after more than 90 years, offering its renowned mechanical quality and craftsmanship, optical quality, accuracy, and reliability.

Reichert **Ultramatic RX Master Phoroptor** and **Ultramatic RX Master Illuminated Phoroptor** are the only refracting instruments completely designed and manufactured in the United States. Each Phoroptor is made of 1,000 pieces, assembled by hand in our Buffalo, New York factory.

Ultramatic RX Master Illuminated Phoroptor features a patented, maintenance-free, cool-running, energy-efficient LED design.

Made in the USA 🇺🇸

Circle No. 28



# OPHTHALMIC

## Product Guide

**STEREO OPTICAL**

### STEREOTESTS AND COLOR TESTS

**Gold Standard**

- Original Stereo Fly
- Randot®
- Stereo Butterfly
- **NEW** Fly, Randot, and Butterfly stereotests including LEA Symbols
- Original Ishihara Color Tests: 14, 24, or 38 plates



Stereo Optical • (800) 344-9500  
sales@StereoOptical.com  
www.StereoOptical.com

**Circle No. 29**

**STEREO OPTICAL**

### FUNCTIONAL VISION ANALYZER

**Contrast Sensitivity Testing for Vision Quality Evaluation**

- Ideal for pre- and post-op cataract, refractive surgery and clinical trials
- Optional software to illustrate real-world image of patient results



Stereo Optical • (800) 344-9500  
sales@StereoOptical.com  
www.StereoOptical.com

**Circle No. 30**

**STEREO OPTICAL**

### OPTEC® 5000 SERIES VISION SCREENERS

**Comprehensive vision screening in minimal time in a controlled environment**

- Quick, repeatable and accurate
- Lightweight and portable
- No training or certification needed
- The 5000P and 5500P include a peripheral test.



Stereo Optical • (800) 344-9500  
sales@StereoOptical.com  
www.StereoOptical.com

**Circle No. 31**

**STEREO OPTICAL**

### OPTEC® PLUS SMART VISION SCREENER

**Pretesting to save valuable time in the exam room**


- Comprehensive library of tests
- Easy-to-use interface
- Randomized tests and customizable protocols
- Auto-mode to allow for self-administration
- Digital recording of results



Stereo Optical • (800) 344-9500  
sales@StereoOptical.com  
www.StereoOptical.com

**Circle No. 32**

## ARE YOU SEEING THE FULL PICTURE?



optomap® Ultra-widefield Color Image      optomap® of Ultra-widefield Autofluorescence Image

**Daytona plus**

optomap takes less than a half a second to:

- Uncover critical information
- Help prevent vision loss
- Increase practice flow

Find out what **optomap** ultra-widefield retinal imaging can do for your practice.

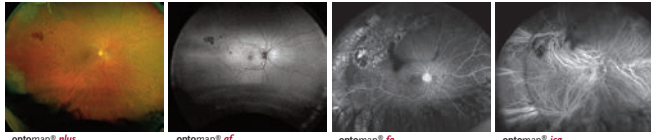
**Optos Tel: (800) 854-3039      email: BDS@optos.com**

**Circle No. 33**

**optos**  
Building The Retina Company  
optos.com

**Nikon** A Nikon Company

## Optos is Ultra-widefield Retinal Imaging



optomap® plus      optomap® of      optomap® fa      optomap® izg

**California**

Our latest retinal imaging device, **California**, is designed to be customized for any eyecare setting. Capture, review and plan your treatment with ultra-widefield images available in the following image modalities:

- Color
- Red-free
- Autofluorescence
- Angiography - Fluorescein and Indocyanine green

**Circle No. 34**

Building The Retina Company      **optos**  
**(800) 854-3039**      optos.com



# OPHTHALMIC

## Product Guide

### AKR 550 AUTO KERATO-REFRACTOMETER

> Outstanding refractive measurement with quick and simple operation

- High-accuracy measurement on even small pupils
- Guided alignment that automatically starts measurement when pupil is focused
- Pupil size measurement in scotopic and photopic light conditions
- Screen tilts and swivels for comfort when seated or standing
- Automatic data transfer to APH 550



Circle No. 35

Optometry



phone: 855.393.4647  
email: info@essilorinstrumentsusa.com  
www.essilorinstrumentsUSA.com

### APH 550 AUTOMATIC PHOROPTER

> High-end automatic phoropter for speed, precision and comfort in every refraction situation

- Highly-intuitive, easy-to-use touch screen control
- Customizable test sequences
- Easy data transfer from lensmeter to streamline exam
- Compare prescriptions in 2 clicks to speed final check
- Quiet and high speed rotation disk for optimal patient comfort



- Integrated printer
- Keyboard panel
- Tilttable touch screen

Circle No. 36

Optometry



phone: 855.393.4647  
email: info@essilorinstrumentsusa.com  
www.essilorinstrumentsUSA.com

### AKR 750 AUTO KERATO-REFRACTOMETER

> Fast, accurate and fully automatic : an ideal solution for delegating patient measurement

- One-touch button measuring process for both eyes
- Ultra-precise measurement for even small diameter pupils
- Auto and manual measurement modes available
- Wide range of measures including peripheral keratometry with eccentricity
- Large 7.5" tilting screen for easy operation
- Automatic data transfer to APH 550



■ Unique "scanning window" with smooth and silent movement to create comfortable and stress-free exam atmosphere



Circle No. 37

Optometry



phone: 855.393.4647  
email: info@essilorinstrumentsusa.com  
www.essilorinstrumentsUSA.com

### RETINA 400 FUNDUS CAMERA

> Simple and flexible solution for high definition retinal imagery

- Non-mydratric retinal camera
- High resolution sensor and wide field of vision
- Intuitive software including automated operations
- Independent screen to facilitate the sharing of results
- Flexible and adaptable to different practice configurations



Circle No. 38

Optometry

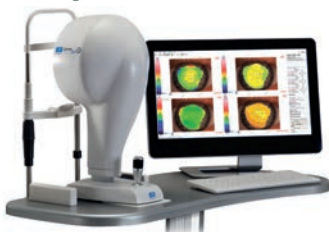


phone: 855.393.4647  
email: info@essilorinstrumentsusa.com  
www.essilorinstrumentsUSA.com

### CORNEA 550 CORNEAL TOPOGRAPHER

> Specially designed for contact lens fitting and dry eye analysis

- High-resolution color camera
- Wide array of graphic representations
- Large contact lens database and autofit function
- Advanced qualitative and quantitative tear film assessment
- Dynamic and static capture pupillometry
- Independent screen to facilitate the sharing of results



Circle No. 39

Optometry



phone: 855.393.4647  
email: info@essilorinstrumentsusa.com  
www.essilorinstrumentsUSA.com

### SL 500L / SL 550L DIGITAL SLIT LAMP

> Professional solution for complete eye examination

- High quality optics and cutting-edge LED illumination
- 5 magnification levels
- Wide range of filters : cobalt blue, green, red, neutral density
- Integrated yellow filter and background illumination
- HD Digital camera DS 550 (optional)

Range of filters



Magnifications



Circle No. 40

Optometry



phone: 855.393.4647  
email: info@essilorinstrumentsusa.com  
www.essilorinstrumentsUSA.com

# OPHTHALMIC

## Product Guide

### One Easy-to-Use Platform

#### 4Sight® Features:

- Combines A-Scan®, UBM®, B-Scan®, and Pachymeter® into one platform
- Easy data transfer between modalities, including DICOM<sup>SM</sup>, for higher patient throughput
- Unsurpassed accuracy and image quality



Circle No. 41



800-979-2020 • 610-889-0200  
info@accutome.com • www.accutome.com/4sight

### High Definition Portable B-Scan

#### B-Scan Plus® Features:

- Superior 0.015mm image resolution with distortion-free zoom up to 2x
- 12 useful measuring calipers as well as fully adjustable gain-control before, during, or after a scan
- Adjustable video loops and easy data transfers including EMR, DICOM<sup>SM</sup>, and .PDF reporting



Circle No. 42



800-979-2020 • 610-889-0200  
info@accutome.com • www.accutome.com/4sight

### Portable Anterior Imaging

Circle No. 43

#### UBM Plus® Features:

- Tools for measuring sulcus-to-sulcus, anterior chamber depth, positioning of IOL, and more
- Detailed structure definition of the anterior segment
- Adjustable video loops and easy data transfers including EMR, DICOM<sup>SM</sup>, and .PDF reporting



800-979-2020 • 610-889-0200  
info@accutome.com • www.accutome.com/4sight

### The Best of Both Worlds

Circle No. 44

#### AccuPen® Features:

The AccuPen is a portable handheld tonometer with a micro strain gauge that provides precise IOP measurements with minimal calibration needed.

#### PachPen® Features:

The PachPen is a portable handheld pachymeter with a 65 MHz sampling rate that ensures precise measurements. It uses digital signal analysis to eliminate the need for any calibration and only take readings when properly aligned.



800-979-2020 • 610-889-0200  
info@accutome.com • www.accutome.com/4sight

### Vantage Plus Convertible & All Pupil II Convertible

- Interchangeable LED or xenon illumination.
- Lightweight Slimline lithium polymer battery.
- Wide range of filters and apertures.
- Exclusive to Vantage Plus:
  - Intelligent Optics.
  - HiMag™ lens: additional 1.6x magnification allows for superb stereoscopic images.



Vantage Plus



All Pupil II

**Keeler** Circle No. 45

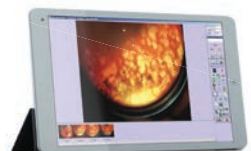
800-523-5620 • 610-353-4350  
Buy Online! • keelerusa.com

### Digital Imaging Anywhere

Circle No. 46

#### Vantage Plus Digital Ophthalmoscope:

- True digital imaging with intuitive and powerful software.
- USB interface.
- Still or dynamic images aid in patient diagnosis.
- Compatible with Windows 10.



**Keeler**

800-523-5620 • 610-353-4350  
Buy Online! • keelerusa.com



# OPHTHALMIC

## Product Guide

### Digital Slit Lamps In Any Style

- Keeler Optics.
- Choose from a variety of Keeler Certified add-ons.
- 3 step drum (10x, 16x, 25x).
- 5 step drum (6x, 10x, 16x, 25x, 40x).
- Your choice of image capturing software.



**Keeler**

Circle No. 47

800-523-5620 • 610-353-4350  
Buy Online! • keelerusa.com

### KSL-H Slit Lamp

- Keeler Optics.
- Choose from analog, digital ready, or digital.
- 3 step drum (10x, 16x, 25x).
- 5 step drum (6x, 10x, 16x, 25x, 40x).
- Keeler Certified 3rd party accessories available for digital slit lamps.



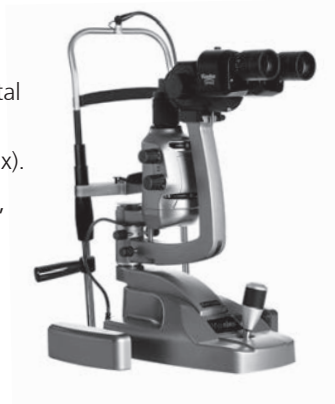
**Keeler**

Circle No. 48

800-523-5620 • 610-353-4350  
Buy Online! • keelerusa.com

### KSL-Z Slit Lamp

- Keeler Optics.
- Choose from analog, digital ready, or digital.
- 3 step drum (10x, 16x, 25x).
- 5 step drum (6x, 10x, 16x, 25x, 40x).
- Keeler Certified 3rd party accessories available for digital slit lamps.



**Keeler**

Circle No. 49

800-523-5620 • 610-353-4350  
Buy Online! • keelerusa.com

### Portable Slit Lamps

#### PSL Classic (left):

- Keeler Optics.
- 10x and 16x magnification.
- Docking station and direct inline charging.

#### PSL One (right):

- Keeler Optics.
- 10x magnification.
- Direct inline charging.



**Keeler**

Circle No. 50

800-523-5620 • 610-353-4350  
Buy Online! • keelerusa.com

### Keeler KAT Goes Digital

#### Digital Applanation Tonometers:

- LED IOP display reads to 1 decimal point.
- Fast and accurate measurements.
- Less moving parts allow for easy calibration.
- R-Type (top), T-Type (left), and Z-Type (right) available.



**Keeler**

Circle No. 51

800-523-5620 • 610-353-4350  
Buy Online! • keelerusa.com

### The Standard In Cryo-Surgery

#### Keeler Cryomatic MKII:

- Cryosmart technology – self-adjusts the optimal operating parameters for any given probe.
- Choose from disposable probes or a series of reusable probes.
- Ease of use – fast-freeze and defrost.
- No manual adjustments, easy setup.



Disposable probe



**Keeler**

Circle No. 52

800-523-5620 • 610-353-4350  
Buy Online! • keelerusa.com

# OPHTHALMIC

## Product Guide

### Less Is More

#### Pulsair intelliPuff™ Tonometer:

- Accurate and easy to use.
- Smallest footprint.
- Wall mountable.
- Economically priced.



**Keeler**

Circle No. 53

800-523-5620 • 610-353-4350  
Buy Online! • keelerusa.com

### Less Is More

#### Pulsair Desktop Tonometer:

- Accurate and easy to use.
- Smallest footprint.
- Economically priced.



**Keeler**

Circle No. 54

800-523-5620 • 610-353-4350  
Buy Online! • keelerusa.com

Circle No. 55

## DRY EYE RELIEF INCLUDES DAILY EYELID HYGIENE



Now available, **Hygienic Eyelid Sheets** designed for use with the **Bruder Moist Heat Eye Compress**. The specially-designed micro fine sheets cleanse oil, debris and makeup from eyelids and lashes when used with the Bruder mask. Perfect for patients suffering from blepharitis or those who wear heavy makeup.

To order, sign in to [order.bruder.com](http://order.bruder.com).  
888-827-8337 | [www.bruder.com](http://www.bruder.com)

**Bruder**

Circle No. 56

## Bruder EyeCompress MOIST HEAT

Patented MediBeads® Technology

### #1 DOCTOR RECOMMENDED COMPRESS FOR RELIEVING DRY, IRRITATED EYES

The **Bruder Moist Heat Eye Compress** provides a clinically proven way to treat chronic dry eye, MGD, blepharitis and other eye irritations. A ten-minute treatment improves oil gland function, helps stabilize the tear film and helps resolve dry eye symptoms.

Contact us to receive a **sample** compress.  
888-827-8337 | [www.bruder.com](http://www.bruder.com)

**Bruder**

### MEDIWORKS SLIT LAMP FAMILY

#### Dedicated to Details

Mediworks pays full attention to every detail in the design of their slit lamps to deliver a great user experience and superior optics. Premium performance, budget friendly, and built to last.

- LED or Halogen illumination available on all slit lamps
- Slit width of 0-14mm and slit length of 1-14mm continuous
- Compact and tower style slit lamps come in either 3 mag or 5 mag versions
- Tower style converging slit lamp has two magnifications of 10X and 16X

Stop paying more for less!



**EYEFFICIENT.**

[www.eyefficient.com](http://www.eyefficient.com)

Circle No. 57

Eyefficient ▲ 800-417-8136  
[www.eyefficient.com](http://www.eyefficient.com)

### CCQ-800 LENSMETER BY YEASN

#### CCQ-800 Features:

- High speed parallel processing system
- Hartman testing method
- Green LED light source, no need for ABBE compensation
- Wide diopter and prism measurement range for all lens types along with hard and soft contact lens
- Low transmittance lens and low astigmatism lens measurable
- 20 diopter prism measurement
- 7" color TFT touch screen
- PD, PH, UV, and Thermal printing function
- Auto lens type detection
- User-friendly interface

Stop paying more for less!



**EYEFFICIENT.**

[www.eyefficient.com](http://www.eyefficient.com)

Circle No. 58

Eyefficient ▲ 800-417-8136  
[www.eyefficient.com](http://www.eyefficient.com)

# OPHTHALMIC

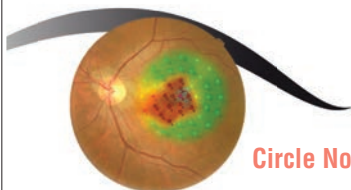
## Product Guide



### MP-3 MICROPERIMETER

FUNDUS CAMERA + VISUAL FIELD

- LIVE EYE PERIMETRY
- 12MP FUNDUS CAMERA
- WIDE MEASUREMENT RANGE



Circle No. 59



CALL TODAY: 1-800-223-9044

usa.nidek.com

17-0010

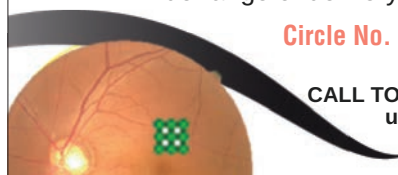
February 15, 2017



### PATTERN SCAN GREEN LASER PHOTOCOAGULATOR

#### GYC-500 Vixi

- 22 preprogrammed scan patterns for various retinal pathologies
- Stable and reliable solid state green laser
- Wide range of delivery options



Circle No. 60



CALL TODAY: 1-800-223-9044  
usa.nidek.com

17-0022

April 6, 2017

### MACUHEALTH WITH LMZ<sup>3</sup> Circle No. 61

Containing all three critical carotenoids in our patented 10:10:2 formula, consisting of meso-zeaxanthin (10mg), lutein (10mg) and zeaxanthin (2mg), MacuHealth with LMZ<sup>3</sup> is proven to quickly and effectively rebuild macular pigment.

A healthy macular pigment reduces oxidative stress, which helps protect photoreceptor cells from damage and reduces the risk of blindness later in life.

Supplementation with MacuHealth with LMZ<sup>3</sup> will help enhance visual performance by reducing glare and improving contrast.



MacuHealth LP  
866-704-0845

www.macuhealth.com

### ICARE ic100 – THE INTELLIGENT TONOMETER

The Icare® ic100 uses patented rebound technology to measure IOP. The device is a hand-held contact tonometer that requires no anesthetic or calibration for use and is suitable for every patient. The added features provide assistance to all operators for proper alignment resulting in accurate and consistent measurements.



To learn more: info@icare-usa.com

# icare

U S A

Circle No. 62

Icare USA ▲ 919-825-4879  
www.icare-usa.com

### PROVUE LCD ACUITY SYSTEM

- Extraordinarily simple, dedicated acuity testing system.
- Aesthetically attractive, modern look.
- Comfortable, user-friendly remote control.
- Multiple levels of contrast sensitivity testing.
- Animation video for pediatric fixation.
- Patient education images.
- ETDRS, specialty testing charts.
- Randomization function helps prevent letter/ character memorization
- Communicates with Marco digital refractors.



Circle No. 63



Marco ▲ (800)-874-5274  
www.marco.com

### COMPUTERIZED READING ACUITY TEST – A KEY QUALITY OF LIFE FUNCTIONAL MEASURE

Whether you are assessing a patient's response to a refractive technology or a disease therapy, reading speed and reading acuity can provide valuable information about the quality of their vision. Remember! Reading acuity and Visual Acuity can be very different.

- Easy, economical and fast testing
- Ability to present sentences as small as 20/16 at 40cm
- Multiple languages
- Adjustable contrast and luminance
- 3 distance algorithms – near (40cm), computer (66cm) and intermediate (80cm)
- Randomized sentences to prevent familiarization



Circle No. 64



SRD Vision ▲ (347)-321-8518  
www.srdvision.com



# OPHTHALMIC

## Product Guide

### i.TERMINAL® 2 & i.TERMINAL® MOBILE BY ZEISS

i.Terminal 2 enables a premium patient experience.

- 60% faster than using manual measuring procedures
- 84% more accurate than a manual process.



Mobile centration is the modern way to capture your patient's individual fitting parameters.

- Can be used with any type of frame including large-sized sunglasses and sports frames
- Can integrate with EMR systems



Circle No. 65

Carl Zeiss Vision Inc. ▲ 1-800-358-8258  
www.zeiss.com/equipment

### i.PROFILER<sup>plus</sup>® BY ZEISS

Ocular wavefront aberrometer, corneal topographer, autorefractor, and keratometer – all in one compact instrument.

- Includes i.Scription® by ZEISS software – Rx technology with ZEISS customized lenses
- Fully automated
- Binocular measurement in less than one minute
- Ocular wavefront measurement up to 7<sup>th</sup> order Zernike aberration
- Integration EMR and ZEISS Digital Refraction Systems
- Optional ATLAS® Review Software for advanced corneal topography



Circle No. 66

Carl Zeiss Vision Inc. ▲ 1-800-358-8258  
www.zeiss.com/equipment

### VISULENS® 500 FROM ZEISS

VISULENS 500 is a straightforward, easy-to-use automated lensmeter designed to speed up your workflow.

- Advanced UV transmission measurement system using four different wavelengths (365, 375, 395, 405 nm).
- Includes a preloaded pen-type marking system
- Integrated green LED (no need to adjust Abbe number)
- Integration with EMR and ZEISS Digital Refraction Systems



Circle No. 67

Carl Zeiss Vision Inc. ▲ 1-800-358-8258  
www.zeiss.com/equipment

### VISUREF® 100 FROM ZEISS

VISUREF 100 – a straightforward, easy-to-use Autorefractor / Keratometer provides accurate and reliable data for your daily practice routines.

- Motorized chin rest
- Auto-trigger function and integrated thermal printer
- Integration with EMR and ZEISS Digital Refraction Systems
- Fogging to reduce the effects of accommodation
- Refraction measurements of patients with implanted IOLs



Circle No. 68

Carl Zeiss Vision Inc. ▲ 1-800-358-8258  
www.zeiss.com/equipment

### VISUSCOUT® 500 FROM ZEISS

With lightweight and compact design, the ZEISS VISUSCOUT 100 allows simple retinal imaging and great flexibility when and wherever the need arises.

- 40° FoV color and red-free images, autofocus
- 9x internal fixation targets
- Battery-powered
- Wi-Fi and USB connectivity, optional DICOM
- Highly portable, lightweight device



Circle No. 69

Carl Zeiss Vision Inc. ▲ 1-800-358-8258  
www.zeiss.com/equipment

### VISUPLAN® 500 FROM ZEISS

VISUPLAN 500 makes this IOP examination very easy precise.

- Air-puff principle
- Fully automated with touch screen operation
- Easy to use and delegate to practice staff
- Fast measurement for easy and early identification of high-risk IOP patients even during pretest exams
- No need for anesthetics or fluorescein
- Integration with EMR



Circle No. 70

Carl Zeiss Vision Inc. ▲ 1-800-358-8258  
www.zeiss.com/equipment

# OPHTHALMIC

## Product Guide

### ZEISS DIGITAL REFRACTION SYSTEM



ZEISS Digital Refraction System provides easy subjective refraction acuity chart and digital phoropter.

- Browser and iPad controlled
- Vision chart available in two versions, can be used as stand-alone
- Flexible, modular and expandable system
- Efficient with preconfigured, customizable workflow
- Connectivity to ZEISS VISUREF 100, ZEISS VISULENS 500 and i.Profiler<sup>plus</sup>
- Clearly structured interface for EMRs
- Freestyle mode for expert users
- Full 21

Circle No. 71



Carl Zeiss Vision Inc. ▲ 1-800-358-8258  
www.zeiss.com/equipment

### SLIT LAMP IMAGING MODULE BY ZEISS

SL 115 Classic - ideal for all routine examinations and contact lens fitting.

SL 120 - a powerful all-rounder offering precise, efficient support for a wide range of applications.

SL 130 - excels at observation, diagnosis and laser therapy.

SL Cam 5.0 Imaging Module - a compact, fully integrated camera for still and video capture with the SL imaging software.



Circle No. 72

Carl Zeiss Vision Inc. ▲ 1-800-358-8258  
www.zeiss.com/equipment

### QUANTIFEYE® MPS II

The Industry-Standard MPOD Measurement and Ocular Assessment Instrument.

Circle No. 73

The QuantifEye MPS II measures macular pigment optical density (MPOD), an important factor in evaluating macular health as part of a larger, more comprehensive retinal exam. This instrument offers:

- Unsurpassed patient and technician usability with Data Quality Index (DQI)
- Significantly faster testing-time in the lane with enhanced features and user-interface
- Intuitive workflow with multiple records



Contact us today for more information and to find out how you can get a 60-day, risk-free evaluation for your practice.

EyePromise ▲ (866) 833-2800  
eyepromise.com/qe

### EYEPROMISE® NUTRACEUTICALS

Live in focus.

Circle No. 74

EyePromise provides expertise in eye health and nutrition science. In delivering unmatched products and services, we offer an extensive line of ocular nutraceuticals that cover a full range of patient needs. Backed by an unconditional 60-day, money-back guarantee, EyePromise is the only brand guaranteed to increase MPOD (macular pigment optical density). Our nutraceutical line can help support:

- Macular health at every age
- Occasional Dry Eye
- Blood Vessel Integrity
- Athletic Visual Performance



Contact us today for more information on any of our nutraceuticals and how they can benefit your patients and practice.

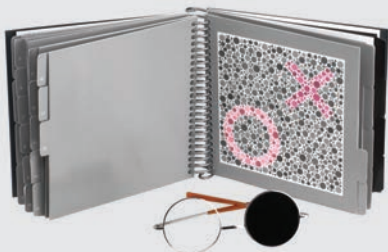
EyePromise ▲ (866) 833-2800  
eyepromise.com/drproducts

### DEMAND A BETTER COLOR VISION TESTING SOLUTION

The HRR Pseudoisochromatic Test is the most advanced color vision test available. Features include **congenital and acquired testing, identification of the type of defect** and diagnosis of the extent of the defect as well as quick **positive classification of normals**. The testing strategy eliminates memorization and malingering. This test is suitable for both adults and children.

Visit [www.good-lite.com](http://www.good-lite.com) and search for p/n 730005.

Circle No. 75



Good-Lite Company ▲ (800)-362-3860  
www.good-lite.com

### LOW-COST ETDRS TESTING

The ESC2000 Illuminator Cabinet provides a uniform retro-illuminated testing surface. The cabinet utilizes a pure-white LED light source. This illuminator has a much smaller footprint (only 3.0 inches deep) than traditional ETDRS light boxes. Simply turn on the ESC device and it is ready for testing. No burn-in time required! Universal power supply!

Visit [www.good-lite.com](http://www.good-lite.com) and search for p/n ESC2000.

Circle No. 76



Good-Lite Company ▲ (800)-362-3860  
www.good-lite.com

# OPHTHALMIC

## NEW MARCO ULTRA M SERIES OF SLIT LAMPS

The new Marco **Ultra M Series of Slit Lamps** not only introduces a new era of diagnostic observation, but completely changes boundaries of conventional slit lamp design and performance. The **Ultra M Series** is an inspiring orchestration of the original Ultra Optics pedigree, highlighted by an elegant and intelligent design, progressive engineering, and functional flexibility. The new **Ultra M Series** from Marco truly represents the next generation slit lamps. Other stand-out features include:

- Single-element, high-luminance LED illumination
- Patent-pending, built-in background illumination system
- Larger, 14 mm continuously variable aperture
- Fully integrated, low-voltage electronics conceals all hardware
- Expanded Patient chin rest access



Circle No. 77



Marco ▲ (800) 874-5274  
www.marco.com

## ION IMAGING™ ANTERIOR SEGMENT SLIT LAMP IMAGING SYSTEM

Marco has redefined slit lamp imaging by combining a new intra-optics beam-splitter/camera adapter with the tremendous computing and imaging power of Apple-Technology. Together they create a highly sophisticated imaging system that emphasizes image quality, simplicity and efficiency. ION combines all of the bulky components (digital camera, adapter, computer, monitor, multiple cables, keyboard, mouse, etc.) of the traditional photo slit lamp, into one sleek, attractive all-in-one device, all at your fingertips, never having to leave the slit lamp. The “on-board” display utilizing our HIPAA compliant App allowing the user to export images to the Cloud or LAN for EMR integration. A system that you will want in every exam room, not missing the opportunity to capture, integrate and educate every diagnosis.



Circle No. 78



Marco ▲ (800) 874-5274  
www.Marco.com

## OPD-SCAN III WAVEFRONT ABERROMETRY

Beyond the ability to gather an autorefractometry, keratometry, pupillometry, corneal topography and wavefront aberrometry in ~10 seconds per eye, the OPD-Scan III adds over 20 diagnostic features never before integrated in one workstation.

- Angle Alpha and Kappa for multi-focal implants
- Retro illumination image displays cataracts, post-op toric IOL alignment, haptics, etc...
- SA of Cornea for Aspheric IOL selection
- Average Pupil Power for post LASIK calculations (APP on ASCRS IOL calculator)

Choosing the right IOL for your patients based on their visual system leads to better outcomes.



Circle No. 79



Marco ▲ (800) 874-5274  
www.marco.com

## M3

### THE WORLD'S FIRST COMBINATION UNIT WITH NCT – THE MARCO M3®

The M3 from Marco is a combination automatic refractor, keratometer and non-contact tonometer. The M3 uses a highly sensitive CCD camera, which creates high-quality images for accurately measuring patients with cataracts, corneal opacities, IOLs and post-Lasik cases. Other features include automated eye alignment, auto-fogging system, tilt screen, motorized chinrest and new ergonomic design. The M3 easily integrates with other Marco refraction systems.



Circle No. 80

Marco ▲ (800)-874-5274  
www.marco.com

## THE EPIC AUTOMATED REFRACTION SYSTEM

The EPIC is our most innovative space- and time-saving combined workstation to streamline operations, grow your business and increase patient satisfaction. Marco has successfully installed thousands of automated refraction systems. Each receives the Marco certified implementation process that guarantees the efficiency and productivity to make your practice more successful. The EPIC delivers:

- Color, touch & tilt-screen for near testing
- Facilitated testing and target fixation
- One-touch toggle for “Quick Refract” sequence
- Intelligent cross cylinder
- Three contrast and glare-testing modes
- 4' x 5' footprint
- EMR integration



Circle No. 81

Marco ▲ (800) 874-5274  
www.marco.com

## MARCO TRS-5100 DIGITAL REFRACTION SYSTEM

The TRS-5100 is controlled with a programmable remote keypad, and delivers refractions in a fraction of the time it takes with traditional methods. The time saved provides more time for patient consults and optical. It allows the patient to simultaneously view their old and new Rx selections including day and night vision differences. The TRS-5100 also makes your life physically easier and more efficient – while giving patients a faster, more accurate, and positive exam experience. This refraction process increases staff efficiency, maximizes patient flow, and increases overall practice revenue and referrals. The TRS is equipped with “Marco Connect” SM software and is EHR/EMR compatible.



Circle No. 82

Marco ▲ (800) 874-5274  
www.marco.com



# OPHTHALMIC

## Product Guide

### VERAPLUG™ FLEXFIT™ - OFFERS 45-DAY RETENTION PLEDGE

The **NEW FlexFit™** Punctal Occluder by Lacriversa offers a fresh approach in bringing greater value to your dry eye practice. The FlexFit nose technology, designed to collapse when inserted, allows for simple sizing, easy insertion, superior retention and excellent patient comfort. In addition, Lacriversa's FlexFit has a premium 45-Day Retention Pledge. If a VeraPlug FlexFit is lost within 45 days of insertion, Lacriversa will replace it free of charge. The VeraPlug FlexFit offers 4 sizes (XS, S, M, L) in both sterile preloaded and nonsterile bulk packages. For more information on the VeraPlug FlexFit and Lacriversa's dry eye line visit [Lacriversa.com](http://Lacriversa.com). Lacriversa is a division of Stephens Instruments.



Circle No. 83

Lacriversa ▲ 855-857-0518  
[www.Lacriversa.com](http://www.Lacriversa.com)

### VX 130

#### Wavefront Anterior Segment Analysis



The **VX130** is the only instrument which features Shack-Hartmann Wavefront Aberrometry, Scheimpflug Corneal Tomography, and Placido Ring Corneal Topography combined in a single instrument, giving you the most comprehensive and accurate anterior segment analysis available today. With patented **POWERMAP®** Wavefront Technology, the **VX130** will provide a **full clinical assessment of both eyes in just 90 seconds** to empower your eye exam.



Circle No. 84

800-729-1959  
[www.visionixusa.com](http://www.visionixusa.com)

**VISI<N>NIX**  
The Vision of the Future

### HELP YOUR DRY EYE PATIENTS FIND RELIEF FAST

Call **833-246-4393** to sell **REFRESH®**

A service for your practice that brings added convenience to your patients.

**RefreshDirect**  
a division of ALLERGAN | DIRECT

[refreshbrand.com/doc](http://refreshbrand.com/doc)



Circle No. 85

© 2018 Allergan. All rights reserved. All trademarks are the property of their respective owners. REF112579 01/18

### VX 55

#### Digitalized Manual Phoropter



The **VX55** makes refraction quicker and easier via an intuitive interface designed for those with manual phoropter experience to make the learning curve as easy as possible.



Circle No. 86

- EMR and 3rd Party Device Integration
- Reduce Repetitive Stress Injury
- Reduce Refraction Time
- Increase Patient Satisfaction

800-729-1959  
[www.visionixusa.com](http://www.visionixusa.com)

**VISI<N>NIX**  
The Vision of the Future

## Give your patients the best

The **NEW All-in-One Smart System™ 2** delivers Simplicity and Power for improved performance.

- Near, Intermediate & Distance Testing
- LEA SYMBOLS® & LEA NUMBERS®
- Patient Education & Internal Marketing
- DVD Functionality
- Validated Contrast Sensitivity with Normative Data

ACCURACY • RELIABILITY • DURABILITY



Circle No. 70



Circle No. 87

TECHNOLOGIES The First Choice in Vision Testing Systems

©2018 M&S Technologies, Inc. Smart System and M&S are registered trademarks of M&S Technologies, Inc. All Rights Reserved.

M&S Technologies

1-847-763-0500

[mstech-eyes.com](http://mstech-eyes.com)

### VX 40

#### Fully Automatic Wavefront Lens Analyzer



This wavefront lens analyzer gives you detailed progressive lens analysis and comparison via easy one-click operation. Precise to .01 diopter, the **VX40** is the perfect instrument for accurate measurements and patient education.



Circle No. 88

- Powermap® Wavefront Technology Sensor
- Automatic Lens Type Detection
- Progressive, SV, and Free-form Lens Analysis
- EMR and 3rd Party Device Integration

800-729-1959  
[www.visionixusa.com](http://www.visionixusa.com)

**VISI<N>NIX**  
The Vision of the Future

# OPHTHALMIC

## Product Guide

### TOPCON 3D OCT-1 MAESTRO

The Topcon 3D OCT-1 Maestro System delivers a new standard of clinical utility by combining a high resolution color non-mydratric retinal camera with the latest Spectral Domain OCT technology. The rotating touch panel and fully automated (alignment, focus and capture) operation make the 3D OCT-1 Maestro the perfect diagnostic solution for even the smallest clinical practice. The Maestro features 50K A Scans/sec and a 12mm x 9mm scan along with automated segmentation, that provides measurement and topographical maps of the optic nerve and macula with Reference Database in one scan.



Circle No. 89

Topcon Medical Systems ▲ (800) 223-1130  
newsgram.topconmedical.com/maestro

### ICARE HOME - ANYWHERE, ANYTIME

The Icare® HOME provides a new way to obtain IOP measurements outside the doctor's office. IOP fluctuates throughout the day and this 24-hour tonometer allows patients to take their own measurements at any time. This added information gives doctors a better understanding of the patient's IOP and can be advantageous for disease management.

To learn more: info@icare-usa.com

**icare**  
U S A

Circle No. 90



Icare USA ▲ 919-825-4879  
www.icare-usa.com

### MEDIWORKS S390 FIREFLY SLIT LAMP IMAGING SYSTEM

#### FireFly

Simply capture every key moment with the highest quality and best value.

- LED illumination
- Auto Exposure / ISO
- Auto OD/OS indication
- Auto White Balance
- Ergonomic trigger for easy capture
- Integrated coaxial background illumination
- 5 mp still photos and full HD video recording
- Full featured Mediview software included and installs on your existing computer

Stop paying more for less!

Circle No. 91



Eyeefficient ▲ 800-417-8136  
www.eyefficient.com

### YPA-2100 DIGITAL REFRACTOR BY YEASN

#### YPA-2100

##### Simplicity, imbued with precision.

Every detail is modernized, integrated into a seemingly simple but excellent and precise design.

##### Tablet Touch Control

Connected with control terminal through built-in WIFI, supporting multi-touch/gesture control.

##### Real-time Graphical User Interface

Minimum training time and cost, fast and easy operation.

##### Ultrathin Design

Ultrathin body with maximum thickness of 92 mm.

##### Connectivity

EMR ready and easily connects to most popular auto refractors and Lensmeters.

Stop paying more for less!



www.eyefficient.com

Circle No. 92

Eyeefficient ▲ 800-417-8136  
www.eyefficient.com

### BVI Launches new Long-Term Dissolvable Implant: Extend 180™

3 sizes!



Extend 180 is designed to provide 6 full months of effective dry eye relief\*. These long-term dissolvable implants are well-suited for post-ocular surgery, seasonal dry eye, contact lens intolerance and/or dry eye associated with digital eye strain. The Extend 180 compliments other punctal occlusion product offerings from BVI which can be used for the diagnosis and treatment of dry eye, including the Parasol® punctal occluder.

\* 510(k) Summary K162361

1.866.906.8080 beaver-visitec.com bvi Beaver Visitec  
Keeping Your Vision in Sight

### ELIMINATE BLINDNESS CAUSED BY AMD

The AdaptDx® dark adaptometer is the only diagnostic aid for the subclinical detection and management of age-related macular degeneration (AMD). The AdaptDx helps you detect AMD three years before drusen are visible to proactively treat this chronic disease and eliminate preventable blindness. Learn how MacuLogix® can help you create an AMD Center of Excellence to save vision and grow practice revenue.

**AdaptDx**



MacuLogix ▲ (717) 914-4067  
www.MacuLogix.com