

# OPHTHALMIC Product Guide

Special Advertising Section



## Dear Doctor,

Review of Optometry is pleased to offer you this preview of many exciting new products now available in the ophthalmic marketplace. Here, you'll learn about innovative new medications, diagnostic instruments, corrective lens options, in-office laboratory equipment and many other products. There are two ways to obtain more information on a particular product:

1. Go to [www.reviewofoptometry.com](http://www.reviewofoptometry.com), click Supplements, Product Guide digital edition, and then follow the prompts.
2. Circle the corresponding number on the enclosed reader service card for each product of interest. Fill in your name and address, and return the postage-paid card to us. Educational materials will be sent directly to you by the individual companies. Thank you for your interest and support!

### Circle No. 1

**MEGA-3 FORTIFIES THE LIPID LAYER WHEN MGD PATIENTS SUFFER FROM DRY EYE.**

Its blend of natural oils protects tears from evaporating while nourishing the tear film.



Allergan (800) 678-1605 [refreshbrand.com/doc](http://refreshbrand.com/doc)

© 2017 Allergan. All rights reserved. All trademarks are the property of their respective owners. REF107962 05/17



### Keeler 40H Goes Digital

The Q series 40H Digital and Digital Ready Slit Lamp comes with many additional features over and above the 40H K series Slit Lamps. As well as benefiting from the combined integrated camera and beam splitter (optional for the Digital Ready version), additional Slit Lamp features include a background illuminator, auxiliary diffuser, blue filter and camera and review control buttons mounted on the dashboard area. Add our Kapture Software Packages. Kapture Lite is a stand-alone system including still capture with live preview, patient data base, image processing, import and export, much more.



### Circle No. 2

Buy Online!  
[keelerusa.com](http://keelerusa.com)



**Keeler**

Keeler Instruments, Inc. ▲ (800) 523-5620  
[www.keelerusa.com](http://www.keelerusa.com)

### Circle No. 3

**Blephadex**  
Science Based Lid Care

#### Tea Tree Oil:

- Anti-bacterial, anti-microbial, anti-fungal

#### Coconut Oil:

- Anti-inflammatory, anti-bacterial, anti-microbial, anti-fungal

Blephadex™ uses a preservative-free, all-natural patented formula of tea tree oil and coconut oil specifically designed for Blepharitis, MGD, Demodex and Dry Eye without any harmful chemicals or burning sensation. You're complete in office and at home treatment.



[WWW.CLEANHEALTHYLIDS.COM](http://WWW.CLEANHEALTHYLIDS.COM) 1-800-980-6551 100% SATISFACTION GUARANTEE



AMNIOTIC EXTRACELLULAR MATRIX **Circle No. 4**

**BioDOPTIX**®

BioDOptix® is a dehydrated, extracellular membrane allograft derived from human amniotic tissue that is intended for use as a scaffold for ocular tissue repair.

#### Convenience

For use in inpatient, outpatient or clinic settings.

#### Performance

Easy to apply and conforms well to the anterior ocular surface. Placement generally does not require sutures or glue.

#### Available

Circular or rectangular sizes are provided for appropriate fit.

**BioD, LLC**  
1-877-675-4149  
[bioDlogics.com](http://bioDlogics.com)

*BioD is now part of Integra Lifesciences*



Requesting product information is now fast and easy! Go to [www.reviewofoptometry.com](http://www.reviewofoptometry.com), click Supplements, Product Guide digital edition and follow the prompts to request product information.

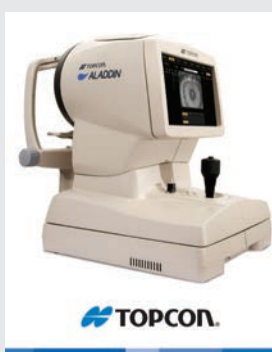
# OPHTHALMIC

## Product Guide

### TOPCON ALADDIN BIOMETER / TOPOGRAPHER

The 9-in-1 Aladdin is a multi-functional instrument that combines a series of measurements to assist eye surgeons in the accurate calculation of IOL power. The built-in full Placido topography system offers all the additional diagnostic capabilities of any stand-alone topographer. New features of the Aladdin HW3.0 include Crystalline Lens Thickness, Central Corneal Thickness, ACD measured by Interferometry, Onboard Barrett IOL Calculation Suite, and Abulafia-Koch Regression Formula for Toric IOL.

Circle No. 5



Topcon Medical Systems ▲ (800) 223-1130  
[newsgram.topconmedical.com/aladdintl](http://newsgram.topconmedical.com/aladdintl)

### TOPCON CA-800 CORNEAL ANALYZER

The CA-800 Corneal Analyzer from Topcon gives you all the tools you need to accurately evaluate the anterior corneal surface. It features a Placido based corneal topographer that analyzes over 100,000 data points as well as meibomian gland imaging, dynamic pupillometry, tear film breakup, contact lens fitting and fluorescein video imaging. And, all this in an easy-to-use platform with an innovative 10.1" touch screen display.

Circle No. 6



Topcon Medical Systems ▲ (800) 223-1130  
[newsgram.topconmedical.com/ca800](http://newsgram.topconmedical.com/ca800)

### TOPCON KR-1W WAVERONT ANALYZER

The 5-in-1 KR-1W Wavefront Analyzer from Topcon combines wavefront aberration, corneal topography, auto-refraction, keratometry, and pupillometry all in one unit! The system is extremely easy to operate, featuring auto alignment and measurement, a large color touch screen, and invisible light measurement for added patient comfort. The onboard evaluation software with multiple map displays provides valuable pre- and post-op data for cataract and refractive procedures. The system is fully networkable in various configurations.

Circle No. 7



Topcon Medical Systems ▲ (800) 223-1130  
[www.topconmedical.com/products/kr1w.htm](http://www.topconmedical.com/products/kr1w.htm)

### TOPCON CV-5000S VISION TESTER

The CV-5000S Automated Vision Tester sets new quality standards. The fast lens rotation provides comfort for both user and patient while the compact and contemporary design enhances the doctor's professional image. The CV-5000S provides a complete 21-point refraction and features the KB-50S One Dial Controller with a 10.4" color touch-screen display. Complete connectivity allows data to be sent automatically to every CV system throughout the office and populated automatically into the EMR, making paperless refraction a reality. Now available with built-in M&S chart software!

Circle No. 8



Topcon Medical Systems ▲ (800) 223-1130  
[www.topconmedical.com/products/cv5000s.htm](http://www.topconmedical.com/products/cv5000s.htm)

### TOPCON TRC-NW400 NON-MYDRIATIC RETINAL CAMERA

The Topcon TRC-NW400 is a fully automated, easy-to-use, non-mydratic retinal camera that is designed to obtain high-resolution color images of the retina and the anterior segment of the human eye. It is equipped with automatic focusing and capture and a fully automated mechanism that moves the optical head from one eye to the other without operator intervention. The TRC-NW400 features a large 10" color touch screen and 9 internal fixation targets for wide-angle compositions of the retina. The TRC-NW400 can be used as a stand-alone unit or in conjunction with a remote server or EMR system. It is DICOM compliant and also available with the optional Topcon IMAGEnet® 5 digital imaging software.

Circle No. 9

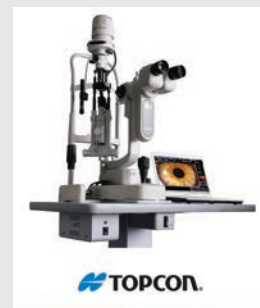


Topcon Medical Systems ▲ (800) 223-1130  
[newsgram.topconmedical.com/trcnw400](http://newsgram.topconmedical.com/trcnw400)

### TOPCON SL-D701 SLIT LAMP

The new SL-D701 Slit Lamp from Topcon features a bright and homogenous LED illumination source for enhanced observation of the eye structures. With its optional DC-4 Digital Photo Attachment, the SL-D701 can obtain clear and sharp still images of the eye as well as vivid color videos with remarkable resolution and detail. Basic EZ Capture software is provided with the DC-4 attachment. To further enhance the imaging results, the SL-D701 also features an optional BG-5 LED Background Illuminator that provides homogeneous adjustable illumination to the photographed areas of the anterior segment of the eye and allows for Meibomian gland observation and documentation.

Circle No. 10



Topcon Medical Systems ▲ (800) 223-1130  
[newsgram.topconmedical.com/sld701](http://newsgram.topconmedical.com/sld701)

# OPHTHALMIC

## Product Guide

### INVIEW - IPHONE BIO EXAM



- Leverage the power and convenience of the Apple iPhone with the trusted quality of Volk optics.
- Quickly & effortlessly capture fundus images for visualization & patient education.
- Mydriatic retina camera using an iPhone (SE/6s/6/5s) or iPod Touch (6).
- 50° static field of view; out to 80° with dynamic maneuvering.
- Free mobile application available in the Apple App Store (search Volk iNview)

Circle No. 11

Volk Optical ▲ (800)-345-8655  
www.volk.com/inview

### VOLK PICTOR PLUS — PORTABLE OPHTHALMIC IMAGER

> From the exam room, to on-location screenings, nursing home calls, and everywhere in between, the Pictor Plus portable imager moves with your practice & makes it possible to expand your services.

- Improves Patient Care
- Simple Integration
- Maximum Portability
- Superior Versatility
- Pays for Itself

> Available imaging modules for the retina and the anterior segment  
> New module available for portable Fluorescein Angiography



Circle No. 12

Making portable possible.

Volk Optical ▲ (800)-345-8655  
www.volk.com

### NEW SINGLE USE LENSES - BIO, LASER, GONIO, SURGICAL



- Sterile Packaged in Boxes of 10 Lenses
- Trusted Quality of Volk Optics
- 100% Assurance Against Disease Transmission
- Pure Convenience – No More Reprocessing
- Available lenses:
  - 3- & 4-Mirror Gonio
  - SLT Laser
  - Capsulotomy & Iridotomy
  - Surgical 20D & 28D BIO
  - Surgical Vitrectomy (6 varieties)

Circle No. 13

Volk Optical ▲ (800)-345-8655  
www.volk.com/volk1

### DIGITAL SERIES SLIT LAMP LENSES

Volk's Digital Series lenses are the highest performance optics in the world. Superior in every way, they replace & outperform the classics (90D, 78D & 60D).



#### Digital Wide Field

- The ultimate 90D lens - 35° wider FOV than a standard 90D
- Widest field slit lamp lens available anywhere
- Excellent through a small pupil



#### Digital High Mag

- 55D lens with highest magnification of any slit lamp lens available anywhere
- Achieves highest resolution image of the posterior pole; great for glaucoma & AMD exam
- Superior stereopsis; identify fluid in front of the macula
- Replaces your 78D & 60D in one lens

Circle No. 14

Why settle for standard definition? Get HD with Volk Digital Series Lenses.

Volk Optical ▲ (800)-345-8655  
www.volk.com

### TOPCON PASCAL® SYNTHESIS™ PATTERN SCANNING LASER WITH ENDPOINT MANAGEMENT™

The Topcon PASCAL® Pattern Scanning Laser Systems are renowned for their precision, ease of use and enhanced patient comfort. The PASCAL® method of photocoagulation allows physicians to control the precision, safety and efficiency of the laser procedure, while optimizing patient comfort and convenience. Topcon offers the PASCAL® Synthesis™ Series, Topcon's premiere dual-port pattern scanning retinal laser, available in both 532nm and 577nm wavelengths. The optional Endpoint Management™ software with Landmark Patterns™ allows for less-damaging sub-threshold treatment of a variety of retinal disorders.

Circle No. 15



Topcon Medical Systems ▲ (800) 223-1130  
pascalvision.com/system

### TOPCON SYNERGY OPHTHALMIC DATA MANAGEMENT SYSTEM

The Synergy Ophthalmic Data Management System integrates images and reports from Topcon and over 130 other manufacturers' systems into a single, secure, digital environment. With the ability to view, compare, annotate and transmit patient images seamlessly and securely, Synergy provides for fluent workflow efficiency and facilitates the transition to a paperless environment. The web-based system allows for rapid access to patient information, anytime, from virtually anywhere, including workstations and remote computers. Designed as a scalable and flexible solution, Synergy integrates with most EMR's, is fully standards compliant and scalable to fit any size practice.

Circle No. 16



Topcon Medical Systems ▲ (800) 223-1130  
www.topconmedical.com/products/synergy.htm

# OPHTHALMIC

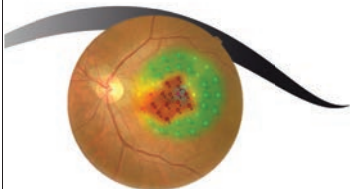
## Product Guide



### MP-3 MICROPERIMETER

FUNDUS CAMERA + VISUAL FIELD

- LIVE EYE PERIMETRY
- 12MP FUNDUS CAMERA
- WIDE MEASUREMENT RANGE



Circle No. 17

CALL TODAY: 1-800-223-9044  
usa.nidek.com

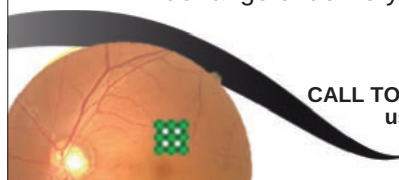
17-0010  
February 15, 2017



### PATTERN SCAN GREEN LASER PHOTOCOAGULATOR

#### GYC-500 Vixi

- 22 preprogrammed scan patterns for various retinal pathologies
- Stable and reliable solid state green laser
- Wide range of delivery options



CALL TODAY: 1-800-223-9044  
usa.nidek.com

Circle No. 18 17-0022  
April 6, 2017

### Ocular Response Analyzer® G3

Circle No. 19

Corneal Hysteresis: The Vital Glaucoma Risk Factor

Make a more confident glaucoma risk assessment, with Corneal Hysteresis.

Ocular Response Analyzer® is the only device that measures Corneal Hysteresis, a superior predictor of glaucoma progression. Corneal Hysteresis has consistently shown to be predictive of, or strongly associated with, glaucoma progression, and more powerfully so, than key indicators such as IOP and CCT.

CPT® Code 92145 for Corneal Hysteresis

Made in the USA

CPT is a registered trademark of the American Medical Association



**Reichert**  
TECHNOLOGIES

Advancing Eye Care. American Innovation.  
www.reichert.com • 888-849-8955

**AMETEK**

### Tono-Pen® and Ocu-Film®

Trusted Handheld Tonometry

Reichert® Tono-Pen® is the standard for handheld applanation tonometers, trusted by clinicians for over 30 years.

The advanced Tono-Pen AVIA® tonometer requires no daily calibration and is always ready-to-use. The ergonomic design and dual-sided displays make it ideal for left or right handed use. Tono-Pen is less sensitive to corneal centration, ensuring fast and accurate IOP measurements with minimal training.

Protect your Tono-Pen and patients with genuine, FDA cleared Reichert® Ocu-Film® + Tip Covers.

Made in the USA

Circle No. 20



**Reichert**  
TECHNOLOGIES

Advancing Eye Care. American Innovation.  
www.reichert.com • 888-849-8955

**AMETEK**

### Reichert® 7CR and Reichert® 7

Non-contact Tonometers

The most advanced and the easiest to use.

In 1972, Reichert invented the non-contact tonometer (NCT), and after 45 years continues to offer the most accurate, trusted, and complete line of NCTs.

From the effortless one-button simplicity of Reichert® 7 to the clinically advanced Reichert® 7CR, which provides Corneal Compensated IOP (IOPcc), Reichert has a non-contact tonometer that suits your needs.

Made in the USA

Circle No. 21



**Reichert**  
TECHNOLOGIES

Advancing Eye Care. American Innovation.  
www.reichert.com • 888-849-8955

**AMETEK**

### iPac®

Handheld Pachymeter.

Intuitive, inspired pachymetry.

Reichert® iPac® is the most feature-rich handheld pachymeter available. It offers Bluetooth® wireless connectivity, one-button navigation, a rotating color LCD screen, and a rechargeable lithium-ion battery.

iPac is backed by an industry-leading three-year warranty.

Made in the USA

Circle No. 22



**Reichert**  
TECHNOLOGIES

Advancing Eye Care. American Innovation.  
www.reichert.com • 888-849-8955

**AMETEK**

# OPHTHALMIC

## Product Guide

### Phoroptor® VRx

#### Digital Refraction System

The most advanced Phoroptor® ever.  
Made in USA with only premium components.

Featuring the thinnest, most compact design, incredibly fast lens exchanges, motorized prisms, split cylinder lenses, and ultra-quiet operation, **Phoroptor® VRx** sets new standards in refraction. The ergonomic keypad features a multi-function control knob with unmatched feel and versatility, while the intuitive touch-screen interface has all the pre-programmed and programmable tests you'll need.

Phoroptor VRx boasts effortless integration with EMR systems, and unlike other digital refraction systems, is compatible with a comprehensive list of pre-test and acuity devices from both Reichert® and other leading manufacturers.

Made in the USA 🇺🇸

Circle No. 23



### ClearChart® 4

#### Digital Acuity Systems

Pixel-perfect and purpose-built.

The all-new family of ClearChart® Digital Acuity Systems are elegant, all-in-one, simple-to-use, and uniquely designed to meet all of your acuity testing needs with a wide selection of optotypes, and other special test charts.

The **ClearChart 4** Digital Acuity System, **ClearChart 4X** Enhanced Digital Acuity System, and **ClearChart 4P** Polarized Digital Acuity System all feature a new 24 inch, high resolution, LED backlit display that are lightweight, cool running and long-lasting. The intuitive user interface provides the best user experience of any digital acuity chart.

Made in the USA 🇺🇸

Circle No. 24



### LensChek™ Pro and LensChek™ Plus

#### Digital Lensometers

Circle No. 25

The elements of refraction. Combining technology, simplicity, and value.

The all-new **LensChek™ Pro** Digital Lensometer® with PD+UV and **LensChek™ Plus** Digital Lensometer® combine technology with simplicity at the core of your exam.

The new, compact, modern design and intuitive user interface offers the easiest lensmeter user experience available. For example, when the target is aligned with the correct optical center, readings can be automatically "locked-in" ensuring fast, repeatable, and reliable lens measurement. Both devices feature a brilliant 5.7 inch color LCD display.

LensChek Pro additionally features UV transmittance and PD measurement.



### OptoChek™ Plus

#### Auto Refractor + Keratometer

The elements of refraction. Combining technology, simplicity, and value.

The all-new **OptoChek™ Plus** Auto Refractor + Keratometer, combines technology with simplicity at the core of your exam. The compact, modern design, and intuitive user interface of the OptoChek Plus offers the easiest user experience available for measuring objective spherical and cylindrical refractive errors as well as keratometry.

An innovative reliability index gives you confidence in obtained readings. Scotopic Pupil Size and Photopic Pupil Size modes adjust illumination to accommodate different lighting conditions. OptoChek Plus features a brilliant 5.7 inch color, touch LCD display, data output options, and a measurement range of Sphere: -30 D to +22 D, Cylinder: 0 D to ±10 D, Axis: 0° to 180°.

Circle No. 26



### VisionChek™

#### Digital Exam Suite

The elements of refraction, featuring SightChek™ Digital Phoroptor®.

The all-new Reichert® **VisionChek™** Digital Exam Suite combines technology, simplicity, and value at the core of your exam, from the brand you've come to rely on most in refraction – Reichert! VisionChek includes all the options to get an entire digital exam lane up and running.

VisionChek Digital Exam Suite features:

**SightChek™** Digital Phoroptor®

**AcuityChek™** Digital Acuity Chart

**OptoChek™ Plus** Auto Refractor + Keratometer

**LensChek™ Plus** Digital Lensometer®

**LensChek™ Pro** Digital Lensometer® with PD + UV

Circle No. 27



### Ultramatic RX Master™

#### Phoroptor®

Since 1921, the unmistakable feel of quality.

The original and world's finest refracting instrument. Phoroptor continues to be the industry standard after more than 90 years, offering its renowned mechanical quality and craftsmanship, optical quality, accuracy, and reliability.

Reichert **Ultramatic RX Master Phoroptor** and **Ultramatic RX Master Illuminated Phoroptor** are the only refracting instruments completely designed and manufactured in the United States. Each Phoroptor is made of 1,000 pieces, assembled by hand in our Buffalo, New York factory.

Ultramatic RX Master Illuminated Phoroptor features a patented, maintenance-free, cool-running, energy-efficient LED design.

Made in the USA 🇺🇸

Circle No. 28



# OPHTHALMIC

## Product Guide

**STEREO OPTICAL**

**Circle No. 29**

### STEREOTESTS



Gold Standard

- Original Stereo Fly
- Randot®
- Stereo Butterfly
- Random Dot E
- Randot® Preschool
- Distance Randot® Stereotest

3D VIEWERS INCLUDED

Stereo Optical • (800) 344-9500  
www.StereoOptical.com

**ORDER ONLINE**

**STEREO OPTICAL**

**Circle No. 30**

### VISION TESTING PRODUCTS



- Digital corneal reflection pupillometer — precise and digital PD measurements.
- Original Ishihara Color Test color perception test for red-green color deficiencies, 14 plates.

\* We also offer Trial Frames and a Large Trial Lenses Box containing 260 lenses, 22 mm aperture.

Stereo Optical • (800) 344-9500  
www.StereoOptical.com

**ORDER ONLINE**

**STEREO OPTICAL**

**Circle No. 31**

### OPTEC® 5000 SERIES VISION SCREENERS



- No training necessary
- Lightweight
- L.E.D lighting system
- Visual acuity testing, color and depth perception
- Monocular and binocular at near, distant, and intermediate

Stereo Optical • (800) 344-9500  
www.StereoOptical.com

**ORDER ONLINE**

**STEREO OPTICAL**

**Circle No. 32**

### OPTEC® PLUS SMART VISION SCREENER



**Pretesting to save valuable time in the exam room**

- Comprehensive library of tests
- Easy-to-use interface
- Randomized tests and customizable protocols
- Auto-mode to allow for self-administration
- Digital recording of results

Stereo Optical • (800) 344-9500  
www.StereoOptical.com

**ORDER ONLINE**

## Identifying subtle changes in pathology.

ZEISS CIRRUS™ HD-OCT



- Anterior Segment Premier Module
- PanoMap™ Widefield Report
- Smart HD Scans and Workflow
- *En Face* Clinical Presets

**Circle No. 33**



**Advancing SMART OCT**  
[www.zeiss.com/us/cirrus](http://www.zeiss.com/us/cirrus)

CIR.9048 ©2017 Carl Zeiss Meditec, Inc. All rights reserved.

## Streamlining clinic flow.

ZEISS Humphrey® Field Analyzer 3



- Reduce setup time
- Improve confidence in test results
- Accelerate clinic workflow
- Simplify operation

**Circle No. 34**



**The best just got better.**  
[www.zeiss.com/us/hfa3](http://www.zeiss.com/us/hfa3)

HFA.9049 ©2017 Carl Zeiss Meditec, Inc. All rights reserved.

# OPHTHALMIC

## Product Guide

### AKR 550 AUTO KERATO-REFRACTOMETER

> Outstanding refractive measurement with quick and simple operation

- High-accuracy measurement on even small pupils
- Guided alignment that automatically starts measurement when pupil is focused
- Pupil size measurement in scotopic and photopic light conditions
- Screen tilts and swivels for comfort when seated or standing
- Automatic data transfer to APH 550



Circle No. 35

Optometry



phone: 855.393.4647  
email: info@essilorinstrumentsusa.com  
www.essilorinstrumentsUSA.com

### APH 550 AUTOMATIC PHOROPTER

> High-end automatic phoropter for speed, precision and comfort in every refraction situation

- Highly-intuitive, easy-to-use touch screen control
- Customizable test sequences
- Easy data transfer from lensmeter to streamline exam
- Compare prescriptions in 2 clicks to speed final check
- Quiet and high speed rotation disk for optimal patient comfort



Circle No. 36

Optometry



phone: 855.393.4647  
email: info@essilorinstrumentsusa.com  
www.essilorinstrumentsUSA.com

- Integrated printer
- Keyboard panel
- Tilttable touch screen

### AKR 750 AUTO KERATO-REFRACTOMETER

> Fast, accurate and fully automatic : an ideal solution for delegating patient measurement

- One-touch button measuring process for both eyes
- Ultra-precise measurement for even small diameter pupils
- Auto and manual measurement modes available
- Wide range of measures including peripheral keratometry with eccentricity
- Large 7.5" tilting screen for easy operation
- Automatic data transfer to APH 550



■ Unique "scanning window" with smooth and silent movement to create comfortable and stress-free exam atmosphere



Circle No. 37

Optometry



phone: 855.393.4647  
email: info@essilorinstrumentsusa.com  
www.essilorinstrumentsUSA.com

### RETINA 400 FUNDUS CAMERA

> Simple and flexible solution for high definition retinal imagery

- Non-mydratric retinal camera
- High resolution sensor and wide field of vision
- Intuitive software including automated operations
- Independent screen to facilitate the sharing of results
- Flexible and adaptable to different practice configurations



Circle No. 38

Optometry

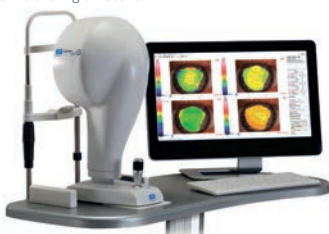


phone: 855.393.4647  
email: info@essilorinstrumentsusa.com  
www.essilorinstrumentsUSA.com

### CORNEA 550 CORNEAL TOPOGRAPHER

> Specially designed for contact lens fitting and dry eye analysis

- High-resolution color camera
- Wide array of graphic representations
- Large contact lens database and autofit function
- Advanced qualitative and quantitative tear film assessment
- Dynamic and static capture pupillometry
- Independent screen to facilitate the sharing of results



Circle No. 39

Optometry



phone: 855.393.4647  
email: info@essilorinstrumentsusa.com  
www.essilorinstrumentsUSA.com

### SL 500L / SL 550L DIGITAL SLIT LAMP

> Professional solution for complete eye examination

- High quality optics and cutting-edge LED illumination
- 5 magnification levels
- Wide range of filters : cobalt blue, green, red, neutral density
- Integrated yellow filter and background illumination
- HD Digital camera DS 550 (optional)

Range of filters



Magnifications



SL 500L / SL 550L



Circle No. 40

Optometry



phone: 855.393.4647  
email: info@essilorinstrumentsusa.com  
www.essilorinstrumentsUSA.com

# OPHTHALMIC

## Product Guide

### One Easy-to-Use Platform

#### 4Sight® Features:

- Combines A-Scan®, UBM®, B-Scan®, and Pachymeter® into one platform
- Easy data transfer between modalities, including DICOM<sup>SM</sup>, for higher patient throughput
- Unsurpassed accuracy and image quality



Circle No. 41



800-979-2020 • 610-889-0200  
info@accutome.com • www.accutome.com/4sight

### High Definition Portable B-Scan

#### B-Scan Plus® Features:

- Superior 0.015mm image resolution with distortion-free zoom up to 2x
- 12 useful measuring calipers as well as fully adjustable gain-control before, during, or after a scan
- Adjustable video loops and easy data transfers including EMR, DICOM<sup>SM</sup>, and .PDF reporting



Circle No. 42



800-979-2020 • 610-889-0200  
info@accutome.com • www.accutome.com/4sight

### Portable Anterior Imaging

Circle No. 43

#### UBM Plus® Features:

- Tools for measuring sulcus-to-sulcus, anterior chamber depth, positioning of IOL, and more
- Detailed structure definition of the anterior segment
- Adjustable video loops and easy data transfers including EMR, DICOM<sup>SM</sup>, and .PDF reporting



800-979-2020 • 610-889-0200  
info@accutome.com • www.accutome.com/4sight

### The Best of Both Worlds

Circle No. 44

#### AccuPen® Features:

The AccuPen is a portable handheld tonometer with a micro strain gauge that provides precise IOP measurements with minimal calibration needed.



#### PachPen® Features:

The PachPen is a portable handheld pachymeter with a 65 MHz sampling rate that ensures precise measurements. It uses digital signal analysis to eliminate the need for any calibration and only take readings when properly aligned.



800-979-2020 • 610-889-0200  
info@accutome.com • www.accutome.com/4sight

### Spectra Iris

Circle No. 45

The little indirect now has even bigger benefits.

- Adjustable aperture for all pupil sizes
- Portable and convenient
- LED long lasting white illumination
- Lightweight and comfortable
- Stylish, comfortable, attractive frame



Buy Online!  
keelerusa.com

Keeler

### Keeler Slit Lamp Technology In Your Hands

Circle No. 46

#### PSL Classic

- Keeler Optics
- 10x & 16x Mag
- Docking Station & Direct Inline Charging

#### PSL 1

- Keeler Optics
- 10x Mag
- Direct Inline Charging

All of the other great features, including iPhone 4 Technology, Controllable illumination from maximum to zero lumens, charge and use the battery simultaneously (always have power); and the most apertures/filters along with 1.1mm square patch for assessing a/c flare.



Buy Online!  
keelerusa.com

Keeler

Keeler Instruments, Inc. ▲ (800) 523-5620  
www.keelerusa.com

Keeler Instruments, Inc. ▲ (800) 523-5620  
www.keelerusa.com



# OPHTHALMIC

## Product Guide

### Digital Imaging Anywhere!

#### New VantagePlus Digital Ophthalmoscope

Keeler leads the way again with the first digital binocular indirect system. Not old analog video but true digital imaging.

Circle No. 47

The intuitive and powerful software allows you to use your laptop or any usb interface to optimize the examination, provide still or dynamic images, which aid in the documentation and diagnosis of your patient.

Increase your practice profile by educating your patients and their family with digital dynamic imaging in your office.



Now with Windows 7 or XP!

Buy Online!  
keelerusa.com

# Keeler

Keeler Instruments, Inc. ▲ (800) 523-5620  
www.keelerusa.com

### Another Bright Idea From Keeler

#### NEW - VantagePlus LED Slimline with Convertible Technology.

(Neutral LED & Xenon illumination)

Circle No. 48

- Longest life – 10,000 hours, brightest, better detail.
- 25% brighter than standard bulbs.
- New Slimline battery, lightest and fits in your hand.
- Combined LED & Lithium Polymer battery can provide up to 6 hours of use on a single charge.



Be the envy of all your peers and ask for a **free, no obligation demonstration!**

Buy Online!  
keelerusa.com

# Keeler

Keeler Instruments, Inc. ▲ (800) 523-5620  
www.keelerusa.com

### ...less has never meant more.

#### Pulsair intelliPuff® Tonometer

##### Less is more.

The Keeler intelligent puff system giving you a quantum leap forwards in accuracy and ease of use. intelliPuff® embodies electronic and optical technology to deliver you the speed, accuracy and ease of use you and your patients deserve.

Circle No. 49

Easiest To Use  
Smallest Footprint  
Lowest Price



Buy Online!  
keelerusa.com

# Keeler

Keeler Instruments, Inc. ▲ (800) 523-5620  
www.keelerusa.com

### ...less has never meant more.

#### Pulsair Desktop Tonometer

##### Less is more.

Pulsair Desktop is uncomplicated and therefore quick to use for the novice and professional alike. Taking control of tonometry has never been easier or faster. Clear user controls and a color video alignment screen combine to set a new standard in usability.

Circle No. 50

Easiest To Use  
Smallest Footprint  
Lowest Price



Buy Online!  
keelerusa.com

# Keeler

Keeler Instruments, Inc. ▲ (800) 523-5620  
www.keelerusa.com

### Keeler KAT Goes Digital

Discover the new standard in Applanation Tonometry. The first FDA 510(k) digital applanation tonometer to receive marketing clearance allows fast and accurate measurements with a LED IOP display. With less moving parts, the D-Kat is more reliable and calibration check takes just seconds.

Circle No. 51

Easiest To Use  
Smallest Footprint  
Lowest Price



Buy Online!  
keelerusa.com

# Keeler

Keeler Instruments, Inc. ▲ (800) 523-5620  
www.keelerusa.com

### Keeler Cryomatic

#### The Standard in Cryo-Surgery

Circle No. 52

The Keeler, CryoMatic is the first ophthalmic cryo-system with **cryosmart technology**. The console has a built-in monitoring system which self-adjusts the optimal operating parameters for any given probe. The CryoMatic offers the surgeon and his staff a system which performs time after time.

- Disposable & Reusable Probes.
- Automatic Gas Adjustment, any probe will perform optimally.
- Fast Freeze and Defrost, for ease of use.
- No manual adjustments, easy set-up.



Buy Online!  
keelerusa.com

# Keeler

Keeler Instruments, Inc. ▲ (800) 523-5620  
www.keelerusa.com

# OPHTHALMIC

## Product Guide

### i.TERMINAL® 2 & i.TERMINAL® MOBILE BY ZEISS

i.Terminal 2 enables a premium patient experience.

- 60% faster than using manual measuring procedures
- 84% more accurate than a manual process.

Mobile centration is the modern way to capture your patient's individual fitting parameters.

- Can be used with any type of frame including large-sized sunglasses and sports frames
- Can integrate with EMR systems



Circle No. 53

Carl Zeiss Vision Inc. ▲ 1-800-358-8258  
www.zeiss.com/equipment

### i.PROFILER<sup>plus</sup>® BY ZEISS

Ocular wavefront aberrometer, corneal topographer, autorefractor, and keratometer – all in one compact instrument.

- Includes i.Scription® by ZEISS software – Rx technology with ZEISS customized lenses
- Fully automated
- Binocular measurement in less than one minute
- Ocular wavefront measurement up to 7<sup>th</sup> order Zernike aberration
- Integration EMR and ZEISS Digital Refraction Systems
- Optional ATLAS® Review Software for advanced corneal topography



Circle No. 54

Carl Zeiss Vision Inc. ▲ 1-800-358-8258  
www.zeiss.com/equipment

### VISULENS® 500 FROM ZEISS

VISULENS 500 is a straightforward, easy-to-use automated lensmeter designed to speed up your workflow.

- Advanced UV transmission measurement system using four different wavelengths (365, 375, 395, 405 nm).
- Includes a preloaded pen-type marking system
- Integrated green LED (no need to adjust Abbe number)
- Integration with EMR and ZEISS Digital Refraction Systems



Circle No. 55

Carl Zeiss Vision Inc. ▲ 1-800-358-8258  
www.zeiss.com/equipment

### VISUREF® 100 FROM ZEISS

VISUREF 100 – a straightforward, easy-to-use Autorefractor / Keratometer provides accurate and reliable data for your daily practice routines.

- Motorized chin rest
- Auto-trigger function and integrated thermal printer
- Integration with EMR and ZEISS Digital Refraction Systems
- Fogging to reduce the effects of accommodation
- Refraction measurements of patients with implanted IOLs



Circle No. 56

Carl Zeiss Vision Inc. ▲ 1-800-358-8258  
www.zeiss.com/equipment

### VISUSCOUT® 500 FROM ZEISS

With lightweight and compact design, the ZEISS VISUSCOUT 100 allows simple retinal imaging and great flexibility when and wherever the need arises.

- 40° FoV color and red-free images, autofocus
- 9x internal fixation targets
- Battery-powered
- Wi-Fi and USB connectivity, optional DICOM
- Highly portable, lightweight device



Circle No. 57

Carl Zeiss Vision Inc. ▲ 1-800-358-8258  
www.zeiss.com/equipment

### VISUPLAN® 500 FROM ZEISS

VISUPLAN 500 makes this IOP examination very easy precise.

- Air-puff principle
- Fully automated with touch screen operation
- Easy to use and delegate to practice staff
- Fast measurement for easy and early identification of high-risk IOP patients even during pretest exams
- No need for anesthetics or fluorescein
- Integration with EMR



Circle No. 58

Carl Zeiss Vision Inc. ▲ 1-800-358-8258  
www.zeiss.com/equipment

# OPHTHALMIC

## Product Guide

### ZEISS DIGITAL REFRACTION SYSTEM



ZEISS Digital Refraction System provides easy subjective refraction acuity chart and digital phoropter.

- Browser and iPad controlled
- Vision chart available in two versions, can be used as stand-alone
- Flexible, modular and expandable system
- Efficient with preconfigured, customizable workflow
- Connectivity to ZEISS VISUREF 100, ZEISS VISULENS 500 and i.Profiler<sup>plus</sup>
- Clearly structured interface for EMRs
- Freestyle mode for expert users
- Full 21

Circle No. 59



Carl Zeiss Vision Inc. ▲ 1-800-358-8258  
www.zeiss.com/equipment

### SLIT LAMP IMAGING MODULE BY ZEISS

**SL 115 Classic** - ideal for all routine examinations and contact lens fitting.

**SL 120** - a powerful all-rounder offering precise, efficient support for a wide range of applications.

**SL 130** - excels at observation, diagnosis and laser therapy.

**SL Cam 5.0 Imaging Module** - a compact, fully integrated camera for still and video capture with the SL imaging software.



Circle No. 60



Carl Zeiss Vision Inc. ▲ 1-800-358-8258  
www.zeiss.com/equipment

### MACUHEALTH WITH LMZ<sup>3</sup> Circle No. 61

Containing all three critical carotenoids in our patented 10:10:2 formula, consisting of meso-zeaxanthin (10mg), lutein (10mg) and zeaxanthin (2mg), MacuHealth with LMZ<sup>3</sup> is proven to quickly and effectively rebuild macular pigment.

A healthy macular pigment reduces oxidative stress, which helps protect photoreceptor cells from damage and reduces the risk of blindness later in life.

Supplementation with MacuHealth with LMZ<sup>3</sup> will help enhance visual performance by reducing glare and improving contrast.

MacuHealth LP  
866-704-0845  
www.macuhealth.com



### ICARE IC100 - THE INTELLIGENT TONOMETER

Icare ic100 tonometer uses patented rebound technology to measure IOP. No calibration and no anesthetic necessary for use. The ic100 decreases human error and increases accuracy with the new added features; Icare AMS, EasyNav and EasyPos. Easy just got easier! For more information: info@icare-usa.com.



Circle No. 62

**icare**  
U S A

Icare USA ▲ 919-825-4879  
www.icare-usa.com

### MEDIWORKS SLIT LAMP FAMILY

#### Dedicated to Details

Mediworks pays full attention to every detail in the design of their slit lamps to deliver a great user experience and superior optics. Premium performance, budget friendly, and built to last.

- LED or Halogen illumination available on all slit lamps
- Slit width of 0-14mm and slit length of 1-14mm continuous
- Compact and tower style slit lamps come in either 3 mag or 5 mag versions
- Tower style converging slit lamp has two magnifications of 10X and 16X



www.eyefficient.com

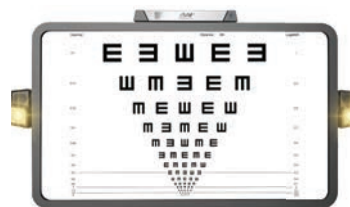
Circle No. 63

Eyefficient ▲ 800-417-8136  
www.eyefficient.com

### MEDIWORKS C900 TRANSFORMER DIGITAL ACUITY SYSTEM

#### The Transformer

Big performance in a small package



www.eyefficient.com

- Comprehensive optotype selection
- Industrial Linux based system
- Integrated LED glare testing
- Contrast sensitivity
- Plays HD movies and children's cartoons
- Impressive looking with a lot of WOW factor

Circle No. 64

Eyefficient ▲ 800-417-8136  
www.eyefficient.com

# OPHTHALMIC

## Product Guide

### VX 120

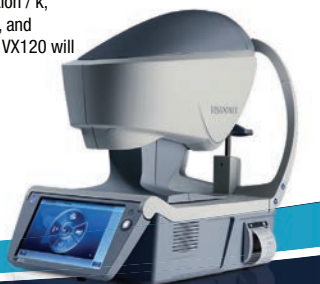
Visual Assessment Device

The first comprehensive diagnostic device that can perform wavefront aberrometry, autorefraction / k, corneal topography, non-contact tonometry, and pachymetry with scheinplflug imaging. The VX120 will empower your eye exam.

- EMR and 3rd party Device Integration
- Customized Screening Options for Cataract, Glaucoma, and Corneal diseases
- Visual Acuity Analysis Including High and Low Order Aberrations
- Performs ALL Diagnostic Tests in Around 90 Seconds



Circle No. 65



800-729-1959  
www.visionixusa.com

**VISIONIX**  
The Vision of the Future

### VX 55

Digitalized Manual Phoropter

The VX55 makes refraction quicker and easier via an intuitive interface designed for those with manual phoropter experience to make the learning curve as easy as possible.

- EMR and 3rd Party Device Integration
- Reduce Repetitive Stress Injury
- Reduce Refraction Time
- Increase Patient Satisfaction



Circle No. 67



800-729-1959  
www.visionixusa.com

**VISIONIX**  
The Vision of the Future

### VX 40

Fully Automatic Wavefront Lens Analyzer

This wavefront lens analyzer gives you detailed progressive lens analysis and comparison via easy one-click operation. Precise to .01 diopter, the VX40 is the perfect instrument for accurate measurements and patient education.

- Powermap® Wavefront Technology Sensor
- Automatic Lens Type Detection
- Progressive, SV, and Free-form Lens Analysis
- EMR and 3rd Party Device Integration



Circle No. 69



800-729-1959  
www.visionixusa.com

**VISIONIX**  
The Vision of the Future

## Easy on the Eyes™

Comfortable Aril™ Amniotic Tissue

Aril® amniotic membrane is both easy on your patient and easy on your practice. Patients will benefit from Aril's high purity, which reduces irritants that cause pain, discomfort, and ultimately costly patient returns to your office. Your practice will benefit from Aril's ease of application, long shelf life and low cost.

Circle No. 66



Blythe Medical

(706) 654-3209

info@blythemedical.com

Blythemedical.com

5mm Disc \$165

## ARE YOU SEEING THE FULL PICTURE?



optomap® Ultra-widefield Color Image

optomap® af Ultra-widefield Autofluorescence Image



- optomap takes less than a half a second to:
- Uncover critical information
  - Help prevent vision loss
  - Increase practice flow
- Find out what **optomap** ultra-widefield retinal imaging can do for your practice.

Optos Tel: (800) 854-3039 email: BDS@optos.com



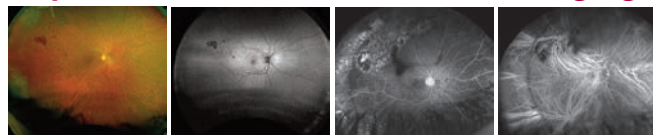
A Nikon Company

Circle No. 68



Building The Retina Company  
optos.com

## Optos is Ultra-widefield Retinal Imaging



optomap® plus

optomap® af

optomap® fa

optomap® kg



Our latest retinal imaging device, **California**, is designed to be customized for any eyecare setting. Capture, review and plan your treatment with ultra-widefield images available in the following image modalities:

- Color
- Red-free
- Autofluorescence
- Angiography - Fluorescein and Indocyanine green

Circle No. 70

Building The Retina Company

(800) 854-3039



optos.com

# OPHTHALMIC

## Product Guide

### Making the revolutionary, routine.

ZEISS AngioPlex™ OCT Angiography

- Advanced vascular imaging
- Enhanced workflow
- Most powerful OCT platform
- Single-scan simplicity

A new era in retinal care  
[www.zeiss.com/us/octangio](http://www.zeiss.com/us/octangio)



Circle No. 71



CIR.9049 ©2017 Carl Zeiss Meditec, Inc. All rights reserved.

### Reducing the risk of refractive surprises.

ZEISS IOLMaster® 700 with Barrett Suite

- Detect unusual eye geometrics
- Detect poor fixation
- Optimize refractive outcomes
- Optimize workflow

Defining next-generation biometry.  
[www.zeiss.com/us/iolmaster700](http://www.zeiss.com/us/iolmaster700)



Circle No. 72

IOL.9050 ©2017 Carl Zeiss Meditec, Inc. All rights reserved.

### QUANTIFEYE® MPS II

The Industry-Standard MPOD Measurement and Ocular Assessment Instrument. **Circle No. 73**

The QuantifEye MPS II measures macular pigment optical density (MPOD), an important factor in evaluating macular health as part of a larger, more comprehensive retinal exam. This instrument offers:

- Unsurpassed patient and technician usability with Data Quality Index (DQI)
- Significantly faster testing-time in the lane with enhanced features and user-interface
- Intuitive workflow with multiple records

Contact us today for more information and to find out how you can get a 60-day, risk-free evaluation for your practice.



EyePromise ▲ (866) 833-2800  
[eyepromise.com/qe](http://eyepromise.com/qe)

### EYEPROMISE® NUTRACEUTICALS

Live in focus. **Circle No. 74**

EyePromise provides expertise in eye health and nutrition science. In delivering unmatched products and services, we offer an extensive line of ocular nutraceuticals that cover a full range of patient needs. Backed by an unconditional 60-day, money-back guarantee, EyePromise is the only brand guaranteed to increase MPOD (Macular Pigment Optical Density). Our nutraceutical line can help support:

- Macular health at every age
- Occasional Dry Eye
- Blood Vessel Integrity
- Athletic Visual Performance

Contact us today for more information on any of our nutraceuticals and how they can benefit your patients



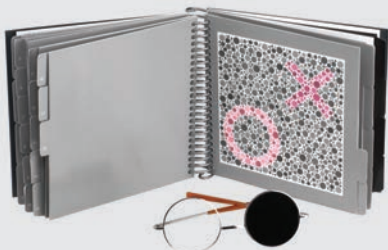
EyePromise ▲ (866) 833-2800  
[eyepromise.com/drproducts](http://eyepromise.com/drproducts)

### DEMAND A BETTER COLOR VISION TESTING SOLUTION

The HRR Pseudoisochromatic Test is the most advanced color vision test available. Features include **congenital and acquired testing, identification of the type of defect** and diagnosis of the extent of the defect as well as quick **positive classification of normals**. The testing strategy eliminates memorization and malingering. This test is suitable for both adults and children.

Visit [www.good-lite.com](http://www.good-lite.com) and search for p/n 730005.

Circle No. 75



Good-Lite Company ▲ (800)-362-3860  
[www.good-lite.com](http://www.good-lite.com)

### LOW-COST ETDRS TESTING

The ESC2000 Illuminator Cabinet provides a uniform retro-illuminated testing surface. The cabinet utilizes a pure-white LED light source. This illuminator has a much smaller footprint (only 3.0 inches deep) than traditional ETDRS light boxes. Simply turn on the ESC device and it is ready for testing. No burn-in time required! Universal power supply!

Visit [www.good-lite.com](http://www.good-lite.com) and search for p/n ESC2000.

Circle No. 76



Good-Lite Company ▲ (800)-362-3860  
[www.good-lite.com](http://www.good-lite.com)

# OPHTHALMIC

## Product Guide

### NEW MARCO ULTRA M SERIES OF SLIT LAMPS

The new Marco **Ultra M Series of Slit Lamps** not only introduces a new era of diagnostic observation, but completely changes boundaries of conventional slit lamp design and performance. The **Ultra M Series** is an inspiring orchestration of the original Ultra Optics pedigree, highlighted by an elegant and intelligent design, progressive engineering, and functional flexibility. The new **Ultra M Series** from Marco truly represents the next generation slit lamps. Other stand-out features include:

- Single-element, high-luminance LED illumination
- Patent-pending, built-in background illumination system
- Larger, 14 mm continuously variable aperture
- Fully integrated, low-voltage electronics conceals all hardware
- Expanded Patient chin rest access



Circle No. 77



Marco ▲ (800) 874-5274  
www.marco.com

### ION IMAGING™ ANTERIOR SEGMENT SLIT LAMP IMAGING SYSTEM

Marco has redefined slit lamp imaging by combining a new intra-optics beam-splitter/camera adapter with the tremendous computing and imaging power of the latest Apple Technology. Together they create a highly sophisticated “mainstream” imaging system that emphasizes image quality, simplicity and efficiency. Ion combines all of the bulky components (digital camera, adapter, computer, monitor, multiple cables, keyboard, mouse, etc.) of the traditional photo slit lamp, into one sleek, attractive all-in-one device, all at your fingertips, never having to leave the slit lamp. The “on-board” display utilizing our HIPPA compliant App allowing the user to export images to the Cloud or LAN for EMR integration. A system that you will want in every exam room, not missing the opportunity to capture, integrate and educate every diagnosis.



Circle No. 78



Marco ▲ (800) 874-5274  
www.Marco.com

### OPD-SCAN III WAVEFRONT ABERROMETRY

Beyond the ability to gather an autorefractometry, pupillometry, corneal topography and wavefront aberrometry in ~10 seconds per eye, the OPD-Scan III adds over 20 diagnostic features never before integrated in one workstation.

- Angle Alpha and Kappa for multi-focal implants
- Retro illumination image displays cataracts, post-op toric IOL alignment, haptics, etc...
- SA of Cornea for Aspheric IOL selection
- Average Pupil Power for post LASIK calculations (APP on ASCRS IOL calculator)

Choosing the right IOL for your patients based on their visual system leads to better outcomes.



Circle No. 79



Marco ▲ (800) 874-5274  
www.marco.com

### MARCO ARK-1S AUTOREFRACTOR/KERATOMETER

The Marco ARK-1s combines an autorefractor/autokeratometer with glare testing! You can now measure and document vision loss due to glare and also test for low contrast, accommodation, and retro-illumination. The new faster and more automated ARK-1s has enhanced features including advanced SLD technology making measurement of patients with dense cataracts possible, incorporating (for the first time) a multiple pupil, zonal ring image method. The ARK-1s has fully automatic alignment, tracking, and focusing ability and can perform a spherical refinement as well as unaided visual acuity. The additional ergonomic design enhancements provide greater comfort for both operator and patient.



Circle No. 80



Marco ▲ (800) 874-5274  
www.marco.com

### THE EPIC AUTOMATED REFRACTION SYSTEM

The EPIC is our most innovative space- and time-saving combined workstation to streamline operations, grow your business and increase patient satisfaction. Marco has successfully installed thousands of automated refraction systems. Each receives the Marco certified implementation process that guarantees the efficiency and productivity to make your practice more successful.

The EPIC delivers:

- Color, touch & tilt-screen for near testing
- Facilitated testing and target fixation
- One-touch toggle for “Quick Refract” sequence
- Intelligent cross cylinder
- Three contrast and glare-testing modes
- 4' x 5' footprint
- EMR integration



Circle No. 81



Marco ▲ (800) 874-5274  
www.marco.com

### MARCO TRS-5100 DIGITAL REFRACTION SYSTEM

The TRS-5100 is controlled with a programmable remote keypad, and delivers refractions in a fraction of the time it takes with traditional methods. The time saved provides more time for patient consults and optical. It allows the patient to simultaneously view their old and new Rx selections including day and night vision differences. The TRS-5100 also makes your life physically easier and more efficient – while giving patients a faster, more accurate, and positive exam experience. This refraction process increases staff efficiency, maximizes patient flow, and increases overall practice revenue and referrals. The TRS is equipped with “Marco Connect” SM software and is EHR/EMR compatible.



Circle No. 82



Marco ▲ (800) 874-5274  
www.marco.com

# OPHTHALMIC

## Product Guide

Circle No. 83

### Bruder

## Surgical Instruments

AND ACCESSORY ITEMS



Bruder Healthcare provides a line of Ophthalmic instruments for medical professionals working to relieve eye discomfort including the popular **KARPECKI Debrider** for removing keratin from the eyelid and the **COLLINS Expressor Forceps** and **BRUDER Roller Forceps** for meibomian gland expression.

Contact us to receive a product catalog.  
888-827-8337 | [www.bruder.com](http://www.bruder.com)

**Bruder**

Circle No. 84

### Bruder

## EyeCompress

MOIST HEAT

Patented MediBeads® Technology

#1 DOCTOR RECOMMENDED COMPRESS  
FOR RELIEVING DRY, IRRITATED EYES

The **Bruder Moist Heat Eye Compress** provides a clinically proven way to treat chronic dry eye, MGD, blepharitis and other eye irritations. A ten-minute treatment improves oil gland function, helps stabilize the tear film and helps resolve dry eye symptoms.

Contact us to receive a **sample** compress.  
888-827-8337 | [www.bruder.com](http://www.bruder.com)

**Bruder**

SMART SYSTEM 2  
20/20 USA

NEW!

Circle No. 85

## The best just got better

The All-in-One **Smart System® 2** delivers Simplicity and Power. It includes the same revolutionary features of the current system plus its overall lighter weight and faster processor gives you improved performance.

Includes: 20 Different Vision Tests • Near, Intermediate & Distance Testing • DVD Functionality • Patient Education • Internal Marketing • LEA SYMBOLS® & LEA NUMBERS®

**M&S**  
TECHNOLOGIES

The First Choice in Vision Testing Systems

©2017 M&S Technologies, Inc. Smart System and M&S are registered trademarks of M&S Technologies, Inc. All Rights Reserved.

M&S Technologies

1-877-225-6101

[mstech-eyes.com](http://mstech-eyes.com)



VERAPLUG™ - #1 CHOICE FOR  
PATIENT COMFORT

Lacrivera's VeraPlug™ Punctal Occluder is quickly becoming the #1 choice by physicians for patient comfort. The VeraPlug conforms perfectly to the punctum for **unparalleled retention**. Enhanced **patient comfort** and **easy insertion** are guaranteed. Available in 4 sizes, the Vera-Plug is offered in both sterile preloaded and nonsterile bulk packaging. Visit [www.Lacrivera.com](http://www.Lacrivera.com) for more information about Lacrivera's other dry eye products.

Circle No. 86



**LACRIVERA**

Lacrivera ▲ 855-857-0518  
[www.Lacrivera.com](http://www.Lacrivera.com)

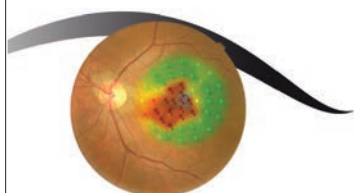


## MP-3 MICROPERIMETER

FUNDUS CAMERA + VISUAL FIELD

- LIVE EYE PERIMETRY
- 12MP FUNDUS CAMERA
- WIDE MEASUREMENT RANGE

Circle No. 87



CALL TODAY: 1-800-223-9044

[usa.nidek.com](http://usa.nidek.com)

17-0010  
February 15, 2017



## PATTERN SCAN GREEN LASER PHOTOCOAGULATOR

Circle No. 88 **GYC-500 Vixi**

- 22 preprogrammed scan patterns for various retinal pathologies
- Stable and reliable solid state green laser
- Wide range of delivery options



CALL TODAY: 1-800-223-9044  
[usa.nidek.com](http://usa.nidek.com)

17-0022  
April 6, 2017

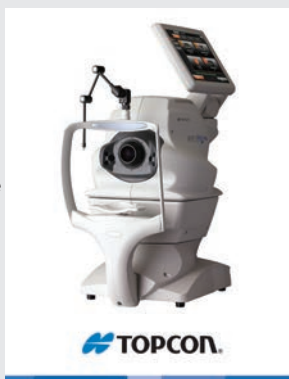
# OPHTHALMIC

## Product Guide

### TOPCON 3D OCT-1 MAESTRO

The Topcon 3D OCT-1 Maestro System delivers a new standard of clinical utility by combining a high resolution color non-mydratric retinal camera with the latest Spectral Domain OCT technology. The rotating touch panel and fully automated (alignment, focus and capture) operation make the 3D OCT-1 Maestro the perfect diagnostic solution for even the smallest clinical practice. The Maestro features 50K A Scans/sec and a 12mm x 9mm scan along with automated segmentation, that provides measurement and topographical maps of the optic nerve and macula with Reference Database in one scan.

Circle No. 89



Topcon Medical Systems ▲ (800) 223-1130  
newsgram.topconmedical.com/maestro

### ICARE HOME - ANYWHERE, ANYTIME

NOW AVAILABLE!

Circle No. 90

24 Hour IOP Self-Tonometry with the Icare HOME tonometer. The HOME was designed for patients who need additional IOP monitoring. This device can help identify IOP variations and spikes outside of the doctor's office. No anesthetic or special skills necessary for use. For more information: info@icare-usa.com.



**icare**  
U S A

Icare USA ▲ 919-825-4879  
www.icare-usa.com

### MEDIWORKS FC-160 DRAGONFLY HAND-HELD FUNDUS CAMERA



The DragonFly

Smart Retinal Imaging Solution

- Non-mydratric
- 3.97" Touch Screen
- 5 Internal Fixation Targets
- 45° Visual Field
- Image Management Software System



**EYE EFFICIENT.**  
www.eyefficient.com

Circle No. 91

Eyefficient ▲ 800-417-8136  
www.eyefficient.com

### MEDIWORKS S390 FIREFLY SLIT LAMP IMAGING SYSTEM

FireFly

Simply capture every key moment with the highest quality and best value.

- LED illumination
- Auto Exposure / ISO
- Auto OD/OS indication
- Auto White Balance
- Ergonomic trigger for easy capture
- Integrated coaxial background illumination
- 5 mp still photos and full HD video recording
- Full featured Mediview software included and installs on your existing computer



**EYE EFFICIENT.**  
www.eyefficient.com

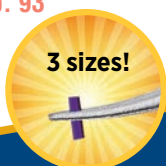
Circle No. 92

Eyefficient ▲ 800-417-8136  
www.eyefficient.com

### BVI Launches new Long-Term Dissolvable Implant: Extend180™

Circle No. 93

3 sizes!



Extend 180 is designed to provide 6 full months of effective dry eye relief\*. These long-term dissolvable implants are well-suited for post-ocular surgery, seasonal dry eye, contact lens intolerance and/or dry eye associated with digital eye strain. The Extend 180 compliments other punctal occlusion product offerings from BVI which can be used for the diagnosis and treatment of dry eye, including the Parasol® punctal occluder.

\* 510(k) Summary K162361

1.866.906.8080 beaver-visitec.com **bvi** Beaver Visitec  
Keeping Your Vision in Sight

### ELIMINATE BLINDNESS CAUSED BY AMD

The AdaptDx® dark adaptometer is the only diagnostic aid for the subclinical detection and management of age-related macular degeneration (AMD). The AdaptDx helps you detect AMD three years before drusen are visible to proactively treat this chronic disease and eliminate preventable blindness. Learn how MacuLogix® can help you create an AMD Center of Excellence to save vision and grow practice revenue.

Circle No. 94

**AdaptDx**



MacuLogix ▲ (717) 914-4067  
www.MacuLogix.com